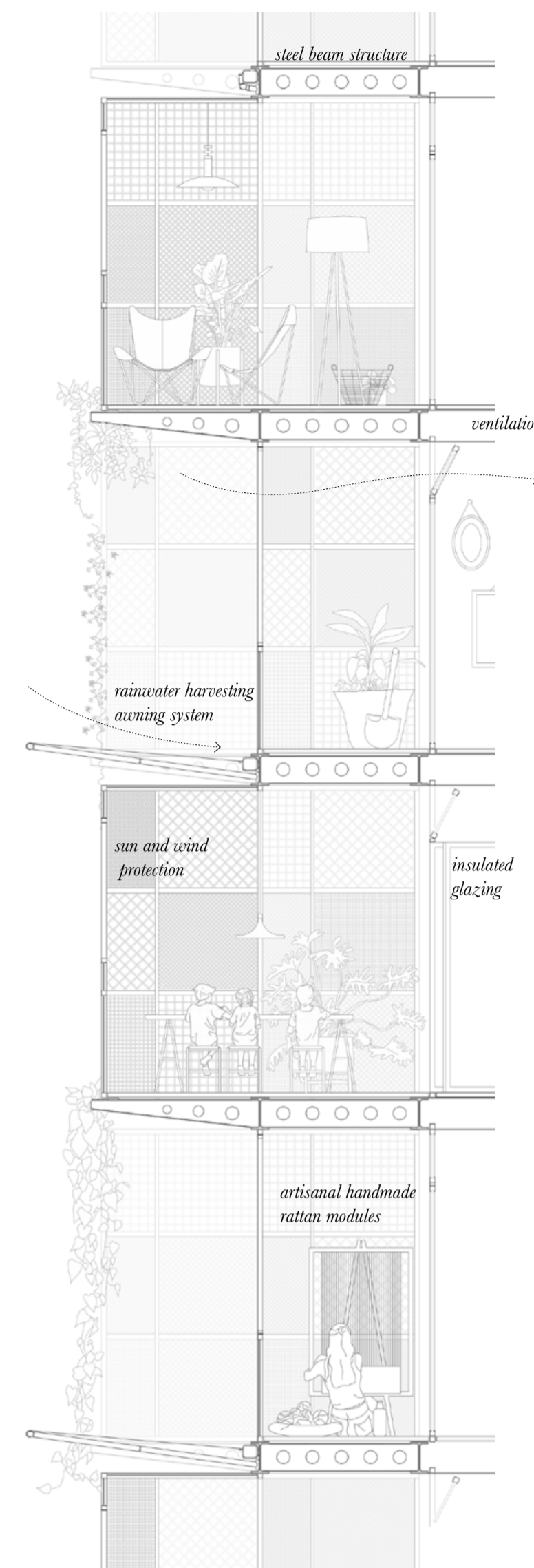


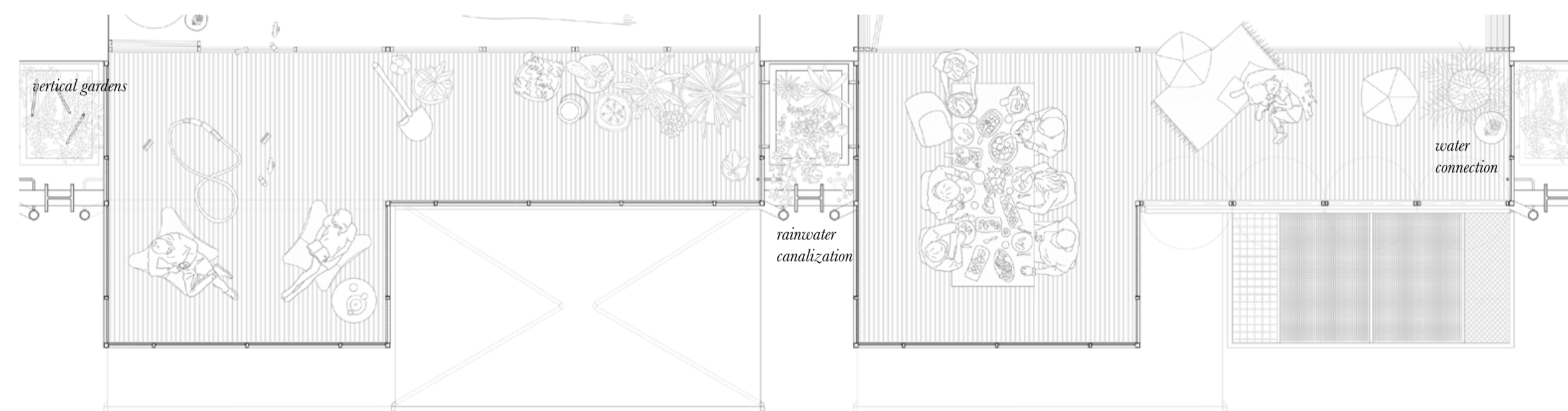
elevation 1:50



section 1:50



elevation 1:200



floor plan 1:50



traditional Indonesian house - rattan



location

# urban gazebo

Jakarta, the capital of Indonesia, is an overcrowded city on the brink of collapse in grave danger from its pollution. Faced with the alarm situation, the government has planned the construction of a new capital on the Island of Borneo. This extreme answer is not a solution if a jungle of glass and concrete is rebuilt again not respecting nature and sustainability.

Indonesia is the world's largest importer of rattan, an ecological material obtained from the climbing palm family of the *Calamoidae* subfamily. Its flexible character makes it easy to work with, and its abundance and resistance make it a material that has been historically widely used for different uses. It is also biodegradable allowing its complete and natural recycling.

What are gazebos? Term used for small auxiliary pavilions that are commonly found in parks, gardens or open areas. A space designed for stay and tranquility, a kind of room open to nature that tries to define the exterior by bringing it closer to a human scale.

With these references, a facade of the future is proposed as a thick membrane. Adapted to the place and its climate, a porous space is sought that protects from solar radiation and favors ventilation. Constructively, a light steel structure and handcrafted rattan panels allow to blur the transition between interior and exterior space. A new limit is generated, capable of harboring life and representing individuality within the collective. The mobile panels and fixed modules enable the growth of plants and facilitate their personalized decoration. Thus, the facade of the future becomes a comfortable space, a new canvas as a hallmark that allows the facade to be finally conquered by its inhabitants.

