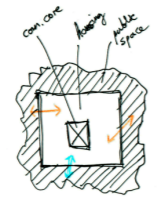


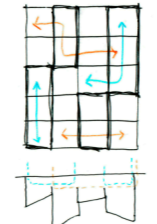
Trento, North East of Italy
Region where there is usually a lot of fog when combining low temperatures and humidity from close Adriatic Sea.



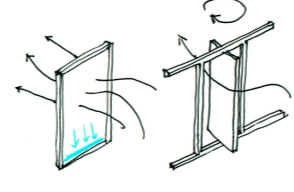
Versatile homes
A residential building for the wide migrant and refugees community with a diversity of ages and family models.



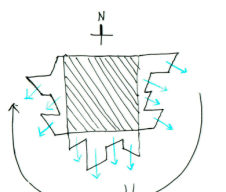
Facade as public space generator
Vertical and horizontal terraces are proposed, as shared places for informal encounters, intermediate spaces between public and private.



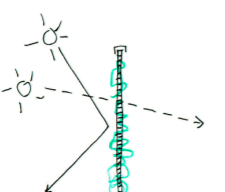
Disolution of private property limit
The facade allows combining or separating the terraces based on relationships among occupants. The idea of "neighbourhood" is recovered counteracting isolation of the homes.



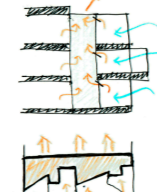
Fog-catching
Wood frames are deployed with plastic fabrics that retain air humidity when the air passes throughout the facade. At the same time, pivoting frames may be released to generate wind energy.



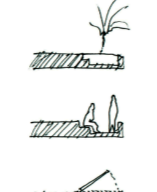
Not orthogonal
Different leanings may be adopted based on facade sun orientation, predominant wind gains or sights.



Vegetal skin
Frames have metal grids that allow wind passing and greenery grow. This way sun light is filtered in winter and blocked in summer.



Thermal cushion
Glass enclosure is retired to the background, heating indoor spaces in Winter by greenhouse effect. Additionally, in summer, stairwells work as sun chimneys, renewing the air passively and with cross ventilation.



Identity
The overhangs' edges are emptied generating a possible space to sit, keep objects or be filled with soil and vegetation. Facade is understood as something incomplete, waiting to be suitable for the tenants.

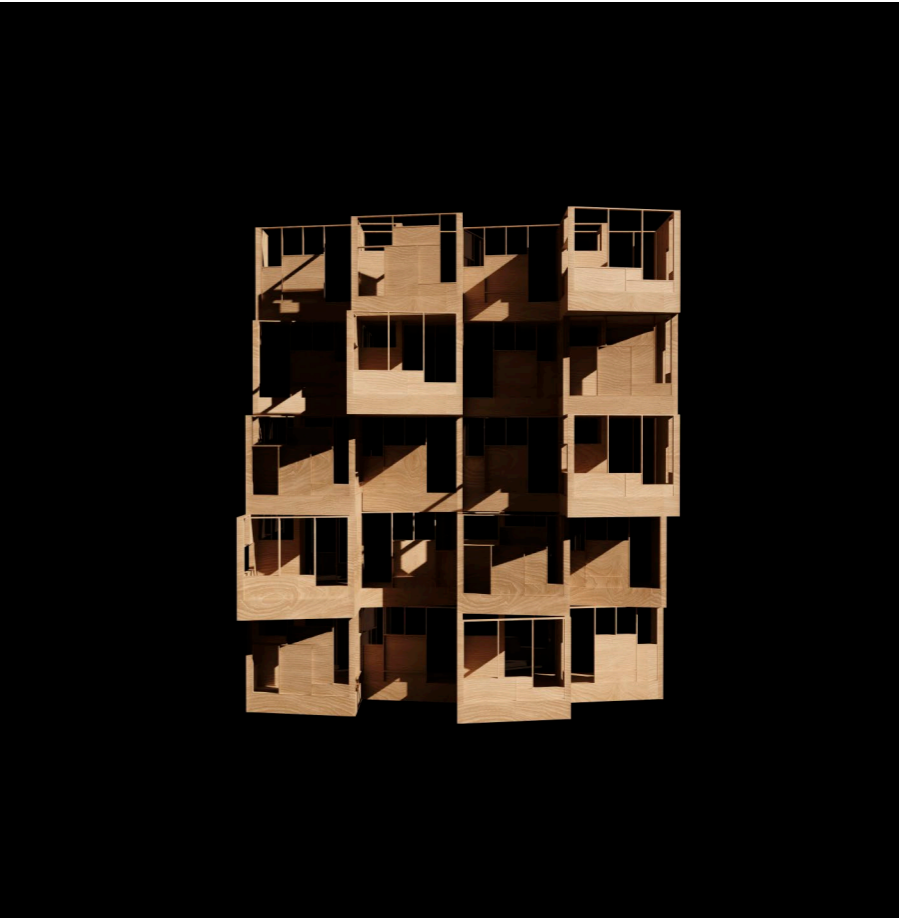
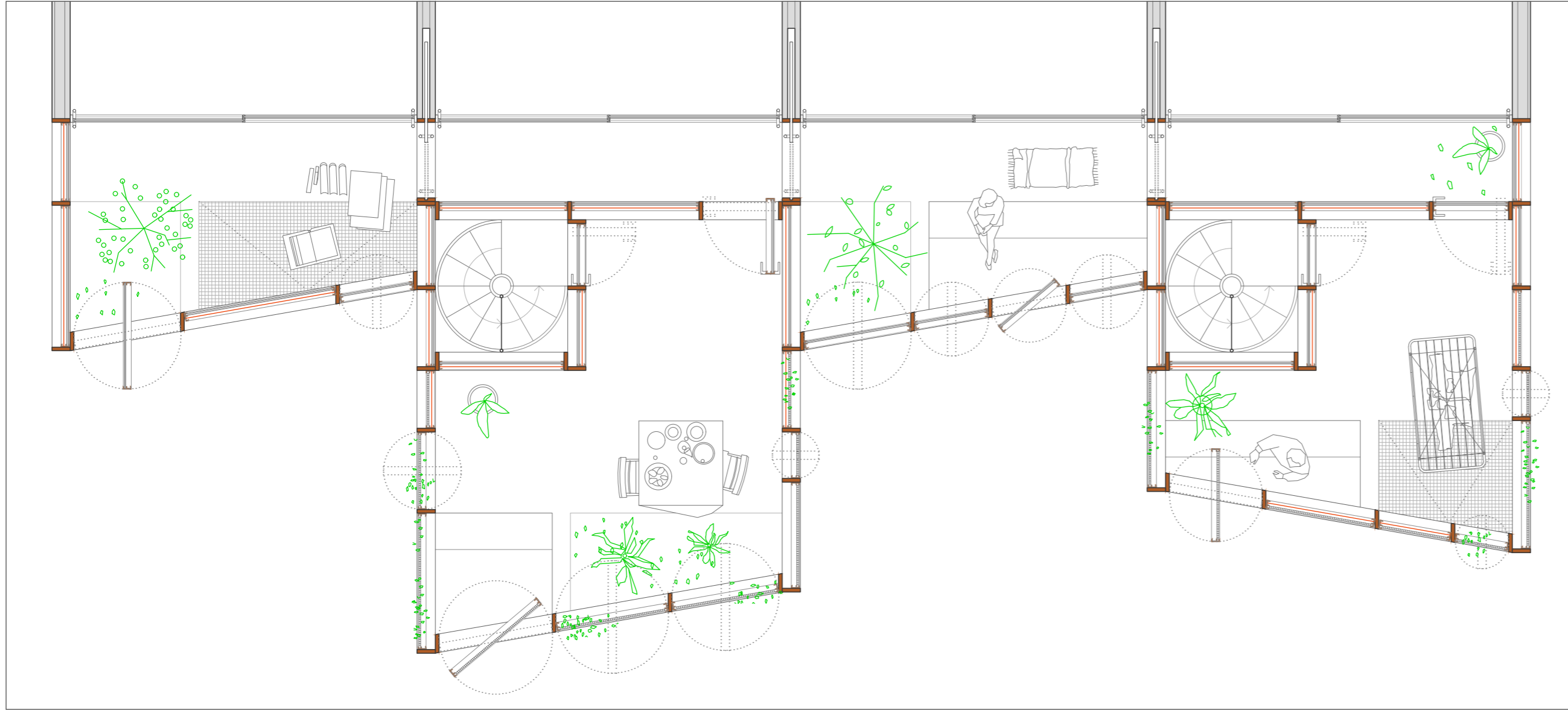
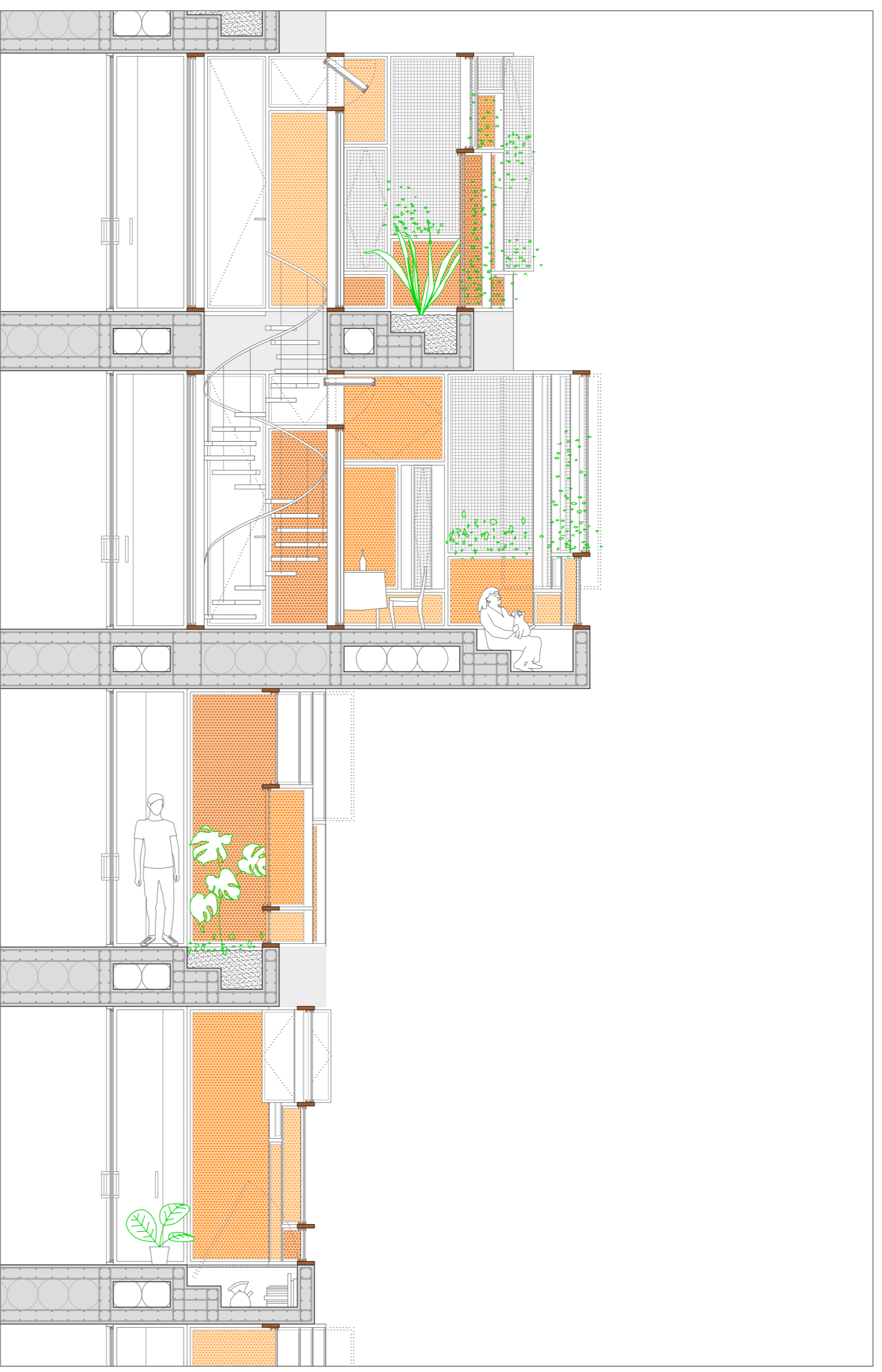
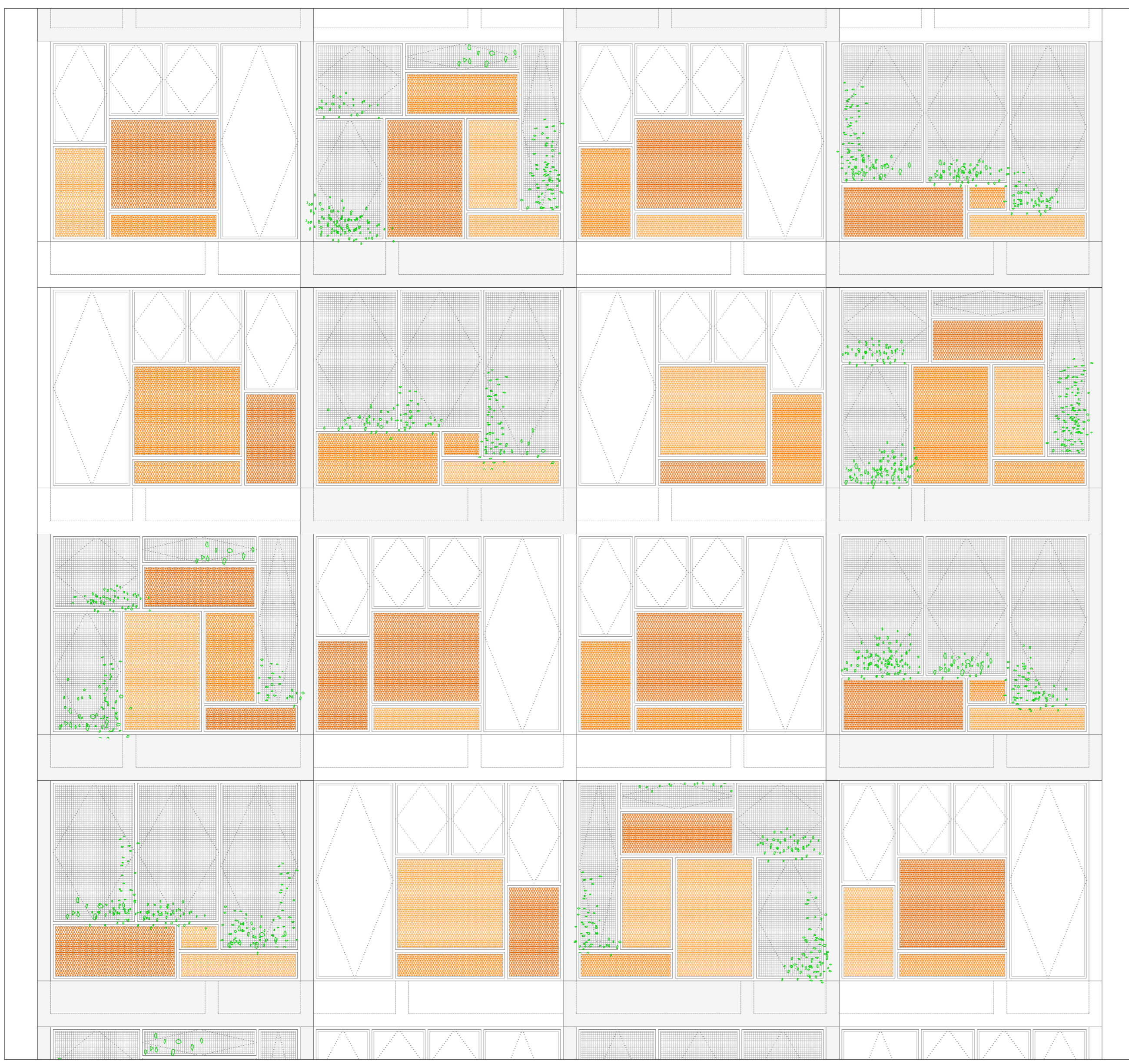


Self-consumption
All the cantilevers are materialized with big edge slabs for great overhangs. Lightening spheres are used which, occasionally, may be used as collected water deposit.

main elevation
1:50

4x4 rooms elevation
1:50

detail section
1:50



floor plan
1:50