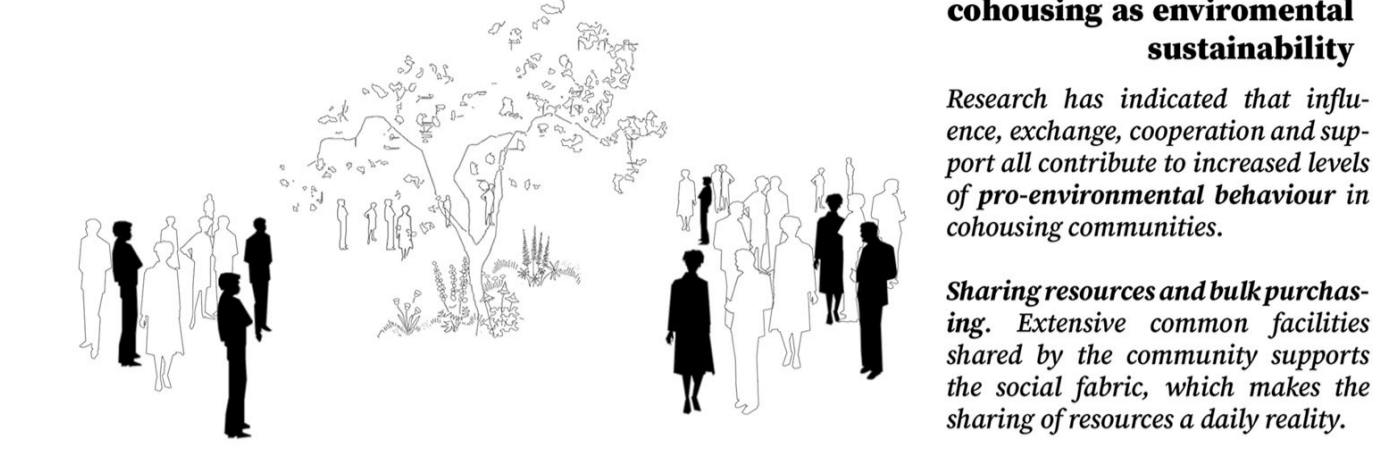


re-connecting people through architecture: the facade as a collective space

The term of "inhabiting" necessarily entails "belonging" somewhere, being part of a community, a culture and, consequently, a landscape. According to that, architecture should be rooted to its surroundings, responding properly to climate conditions, local techniques and creating a frame for people that strengthens interaction and social relations.

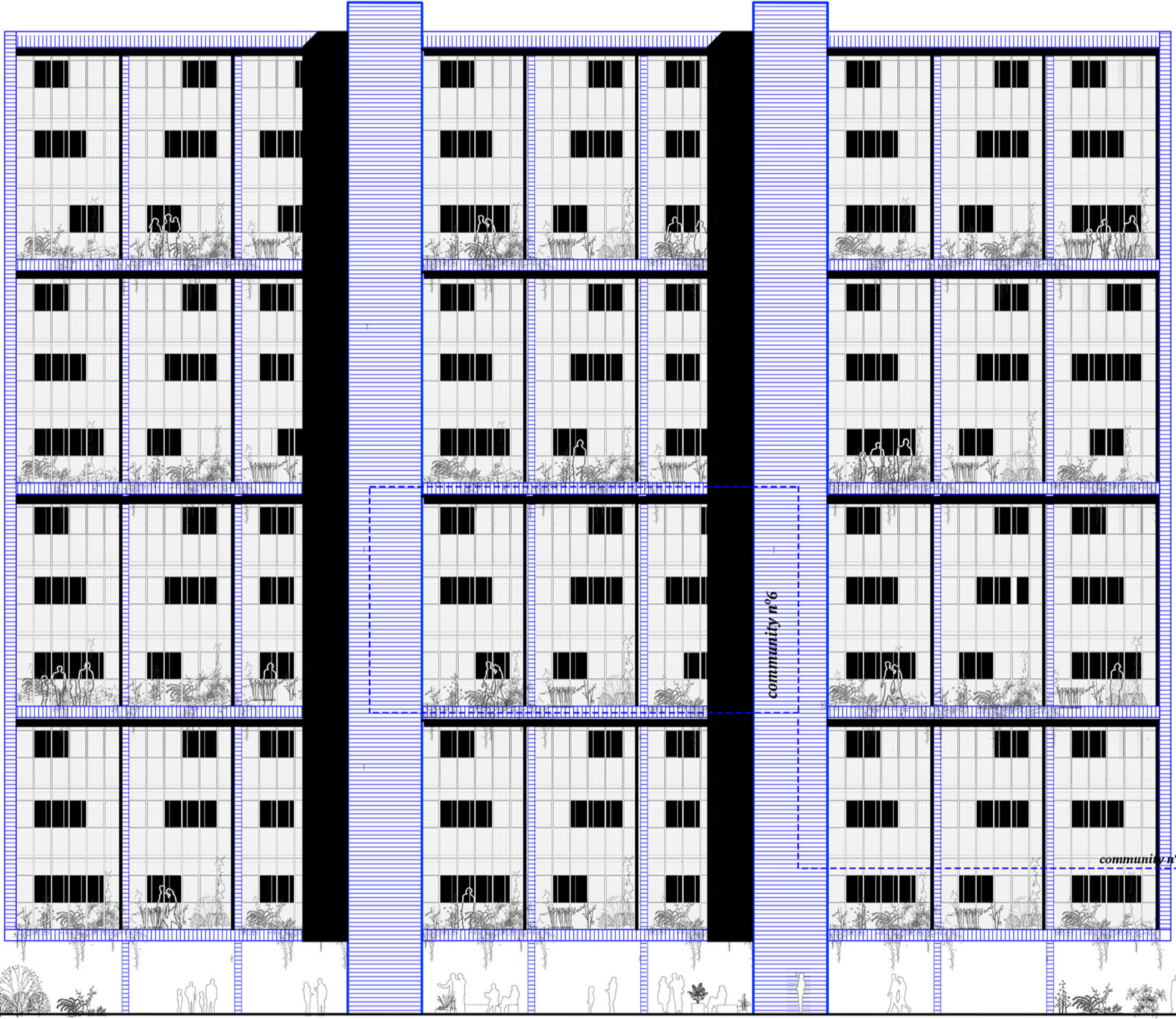
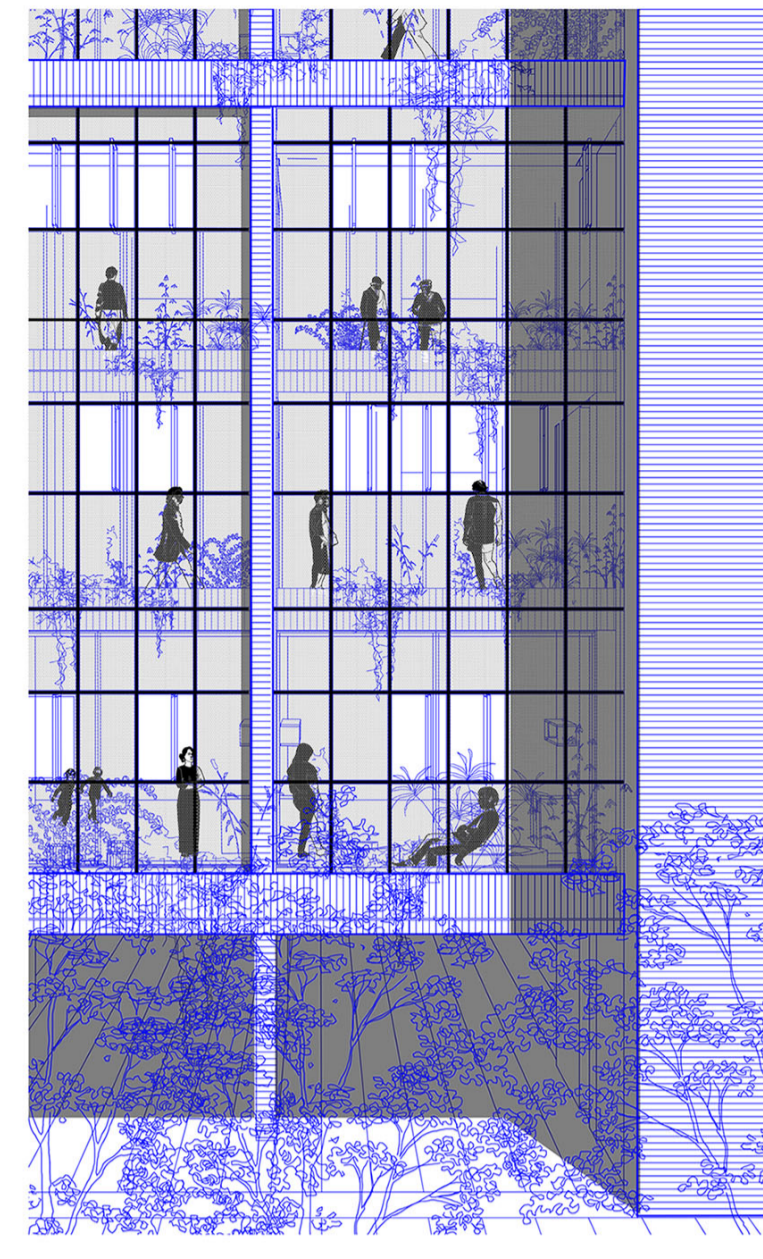
In that sense, on this proposal the facade becomes the element that integrates those ambitions. It is not only the space where relations between neighbours take place but also a system that responds to climate and local conditions.



materially simple, relationally rich

All materials used to configure the facade are locally sourced. When compared with industrially-produced materials, vernacular materials have low environmental impact.

The facade is shaped by local materials and techniques as a factor of local socio-economic development.



the human scale

The building is divided in different communities that work independently. Each community shares a collective space that ensures the relations between its members. The proposal aims to enhance human interaction as well as creating a community with its own identity.

Being part of a collective reinforces the function of private spaces. The existence of in-between spaces of relation strengthens the purpose of the intimate spaces, balancing the scale between community and individuality.

the facade as a collective space

The facade and the space related to it act as a collective space. In that sense, the facade is understood not only as a thin layer but as an exterior space formed by a series of layers where life, interaction and spontaneity takes place.

