



# AKIRA



Plan and Buildings of Neo-Tokyo in the 1988 film AKIRA



In 1982, Katsuhiro Otomo first published "AKIRA". It takes place in the year 2020, in the new born city of "Neo-Tokyo". The manga (and later film) shows us a massively built city, very industrialized and with extremely high buildings, which tops are out of sight to the spectator. As we are in 2020, AKIRA feels old in the way that it shows the city of Tokyo in the following 20 years, so the project tries to approach a "New Neo-Tokyo", where I tried to update one building shown in the film with the concerns of our era's Architecture.

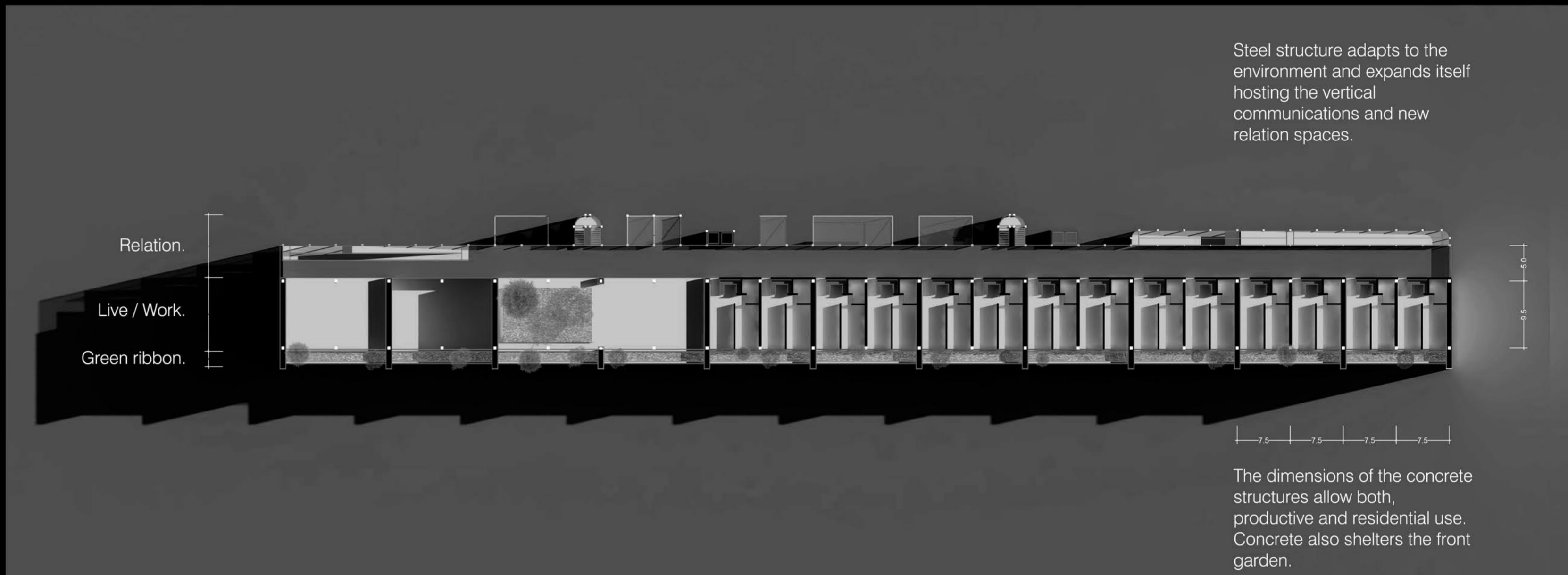
## New Neo-Tokyo Neighborhood



**Regular neighborhood in Tokyo.**  
High Density.  
Fragmented.  
Hard Ground.  
Low Height.

**New Neo-Tokyo neighborhood.**  
High Density.  
Mixed-use buildings.  
Soft Ground.  
High Heights.  
Vegetation.

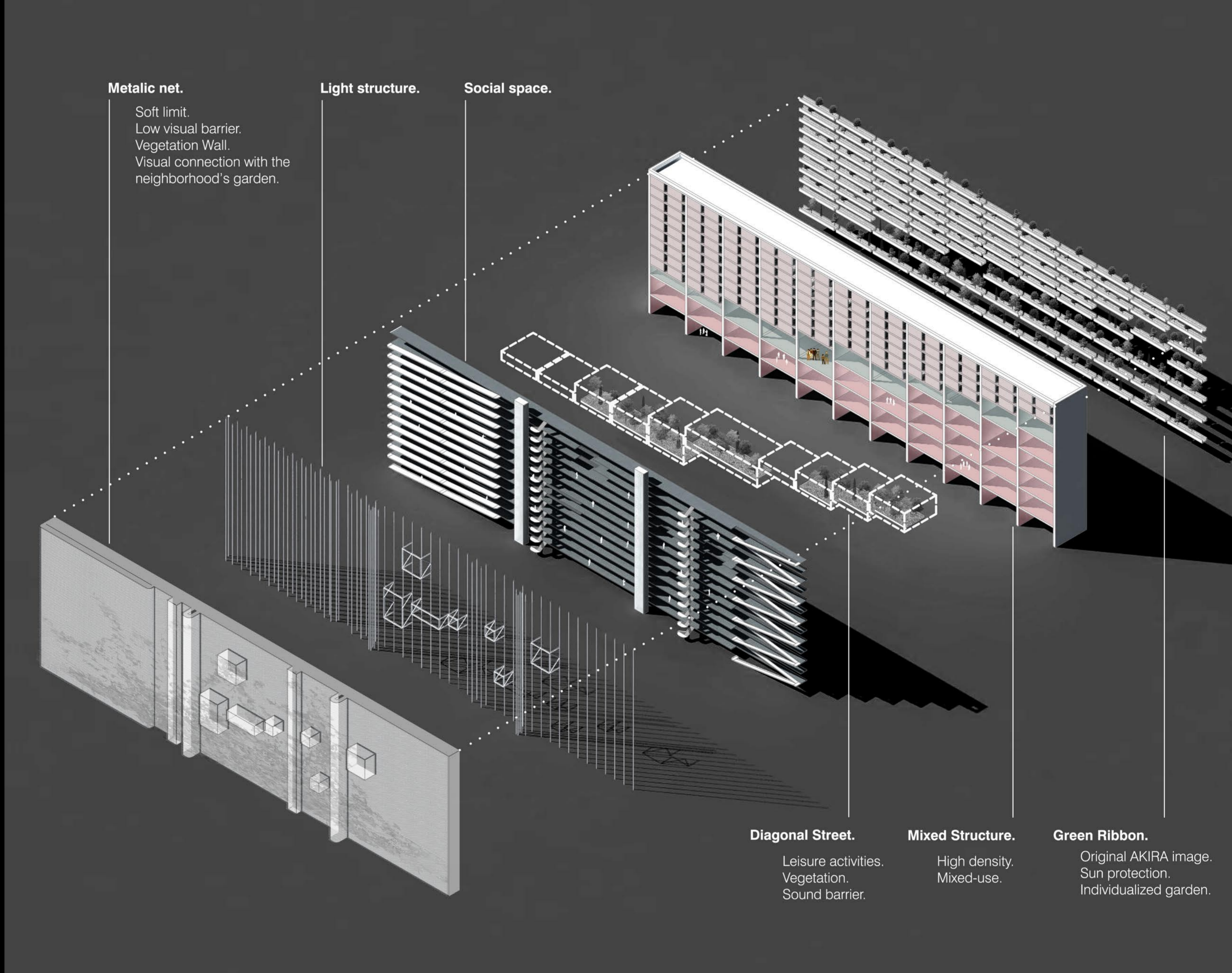
## General Plan



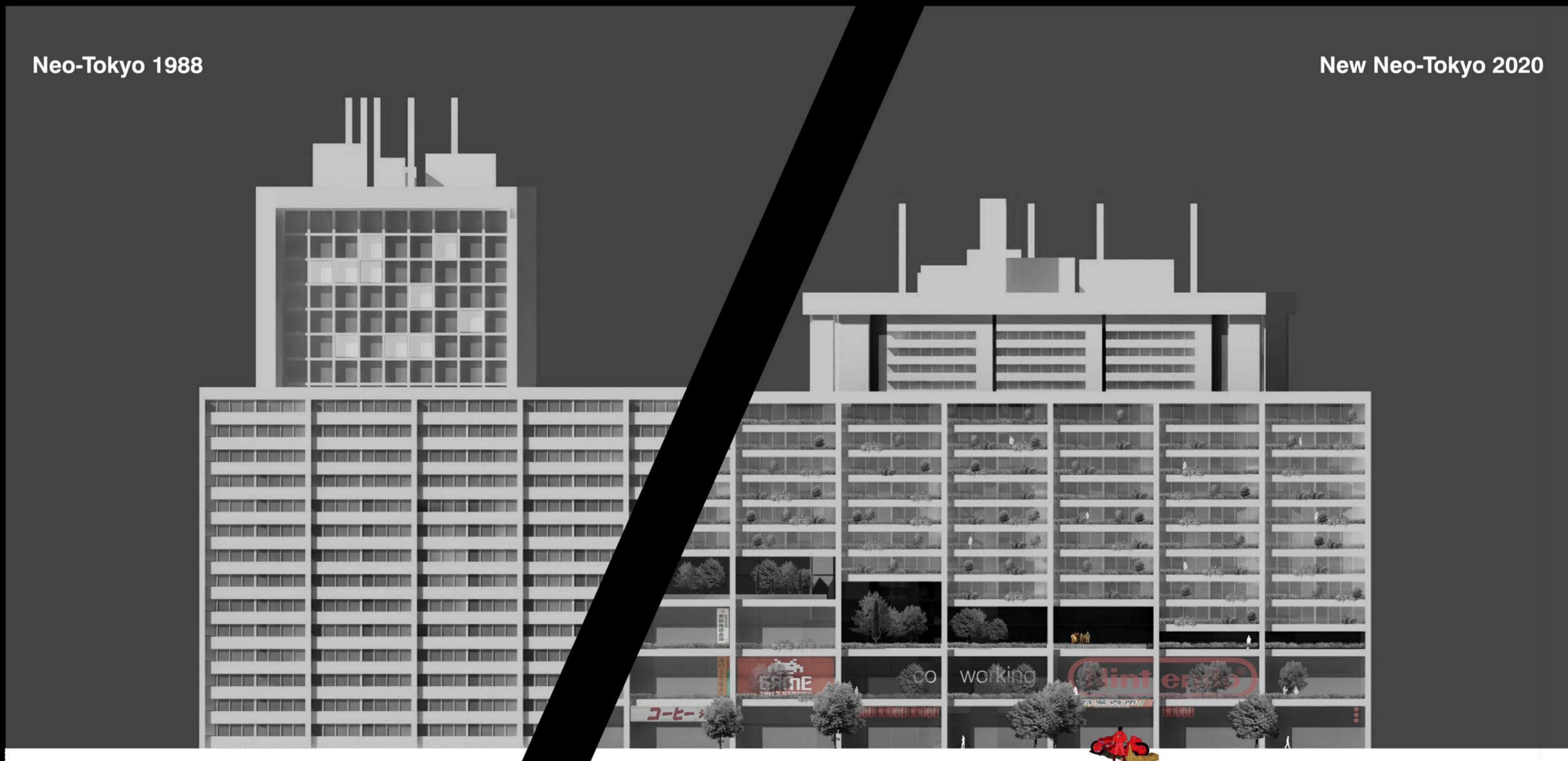
## Elements

**Regular corridor building**  
Hermetic.  
Just Residential.  
No Vegetation.  
Narrow spaces.

**New Neo-Tokyo building**  
Flexible.  
Vegetation.  
Wide spaces.  
Mixed-use.



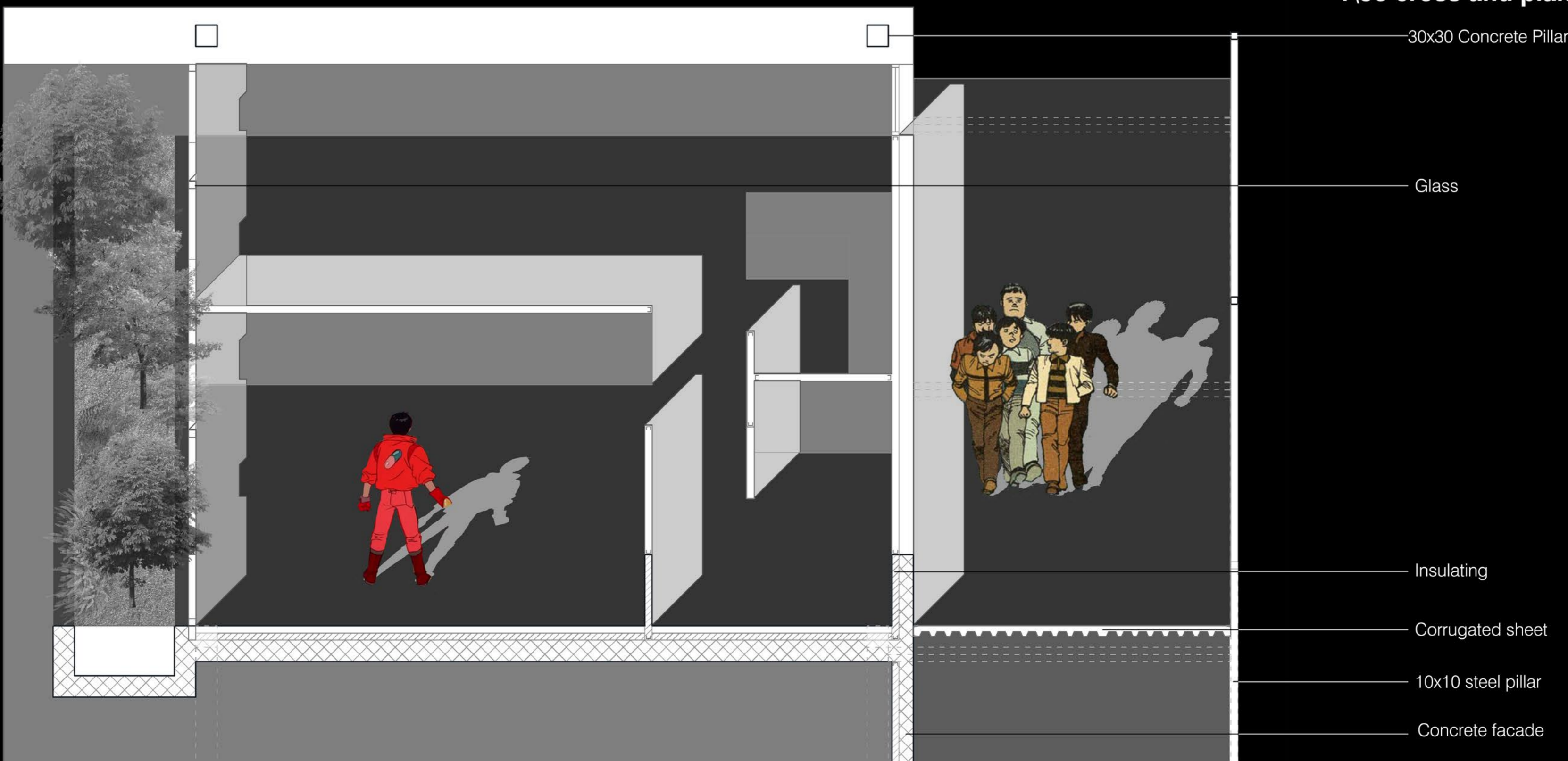
## Front view



## Active Neighborhood



## 1/50 cross and plan



# NEW NEO-TOKYO

