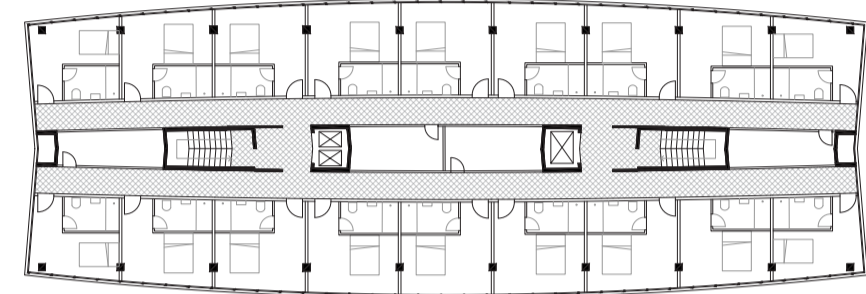
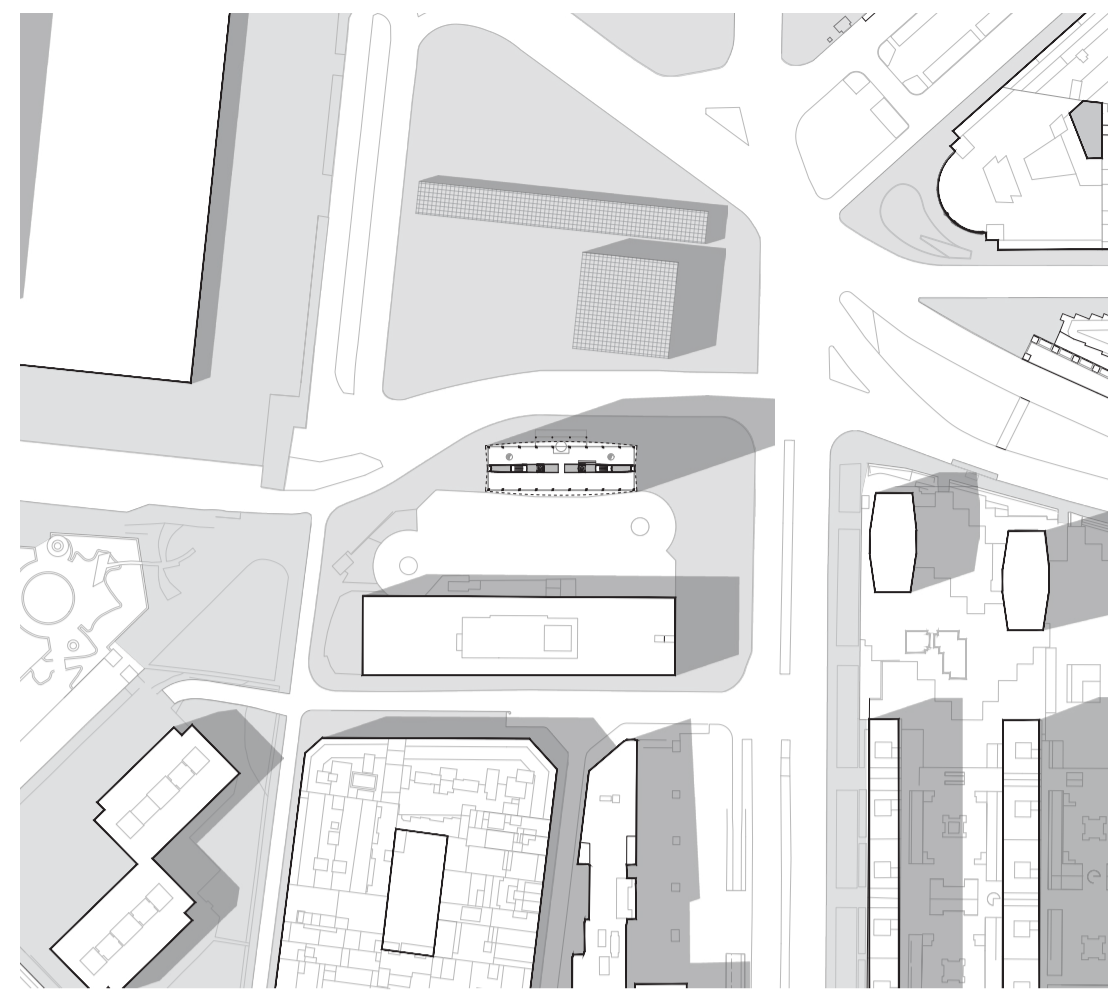
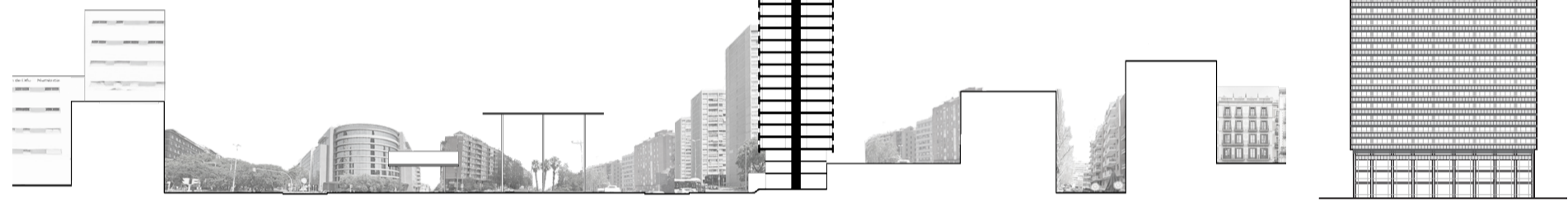
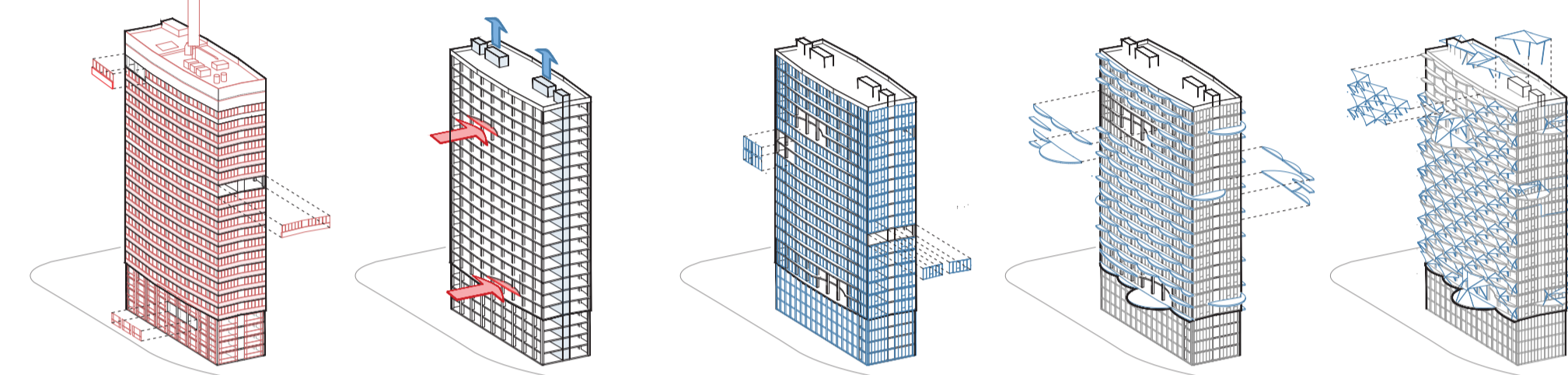
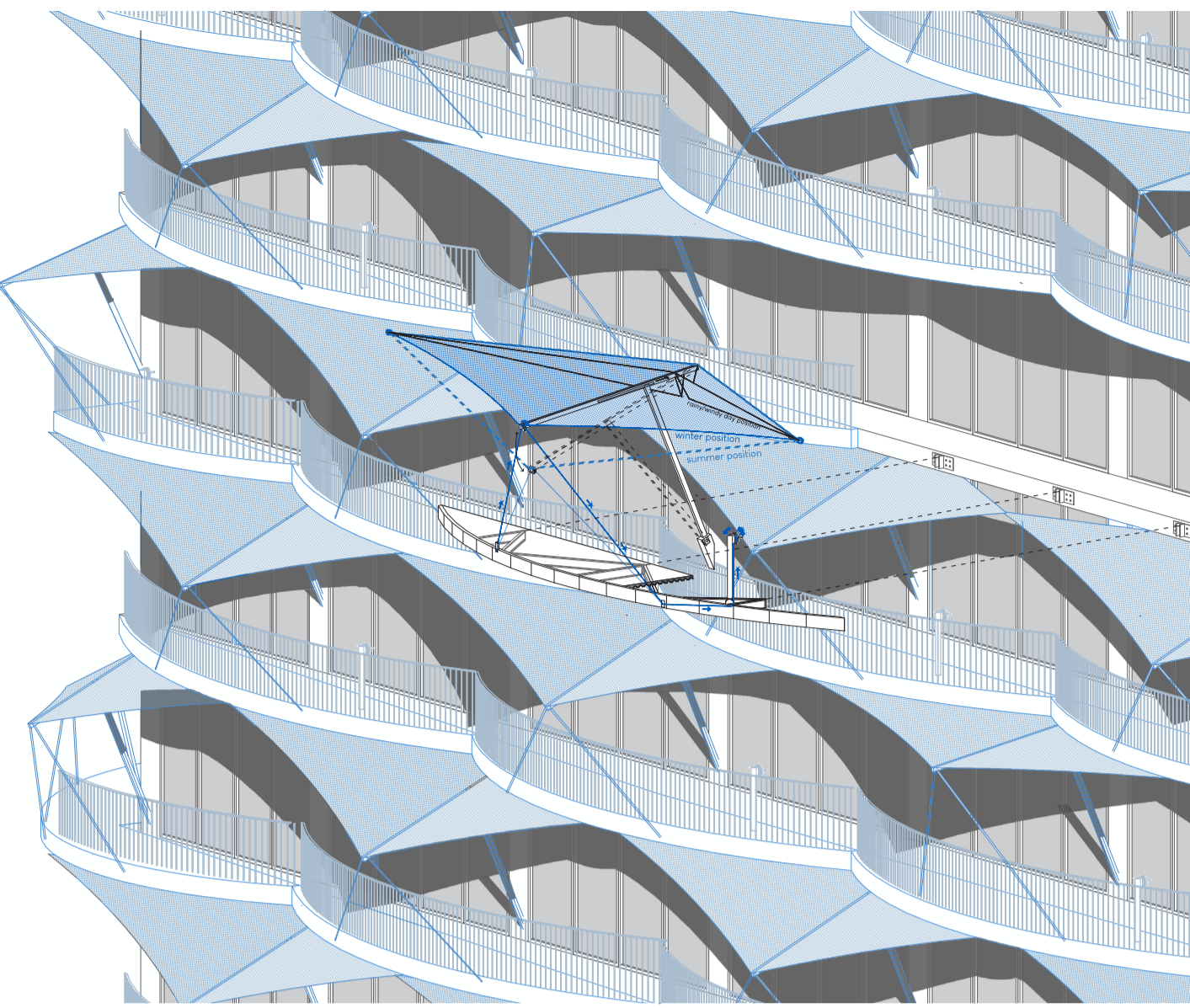


The Sants station in Barcelona, along with its square, represents a major connection and gathering point. Both have approved projects for renovation; however, the hotel building facing the square is not included in this plan. It was built in 1977, is currently for sale, and has not aged well, making it an ideal (ugly) candidate for transformation.



The proposal aims to decompact the existing building by creating open outdoor spaces at different heights with varying degrees of privacy through terraced structures embedded in the framework and a pergola system that will help support them and provide solar protection.

Given that it was originally a building with narrow corridors and very compact interior spaces, it was important to generate high-quality outdoor space. Hence, the proposal seeks to maximize this through cantilevered terraces. The small terraces, which have a maximum width of 1.75 meters, will group 2, 3, and 4 rooms together, while the larger ones will be positioned in front of the emptied spaces to create a suspended platform as a common outdoor space for residents. Structurally, these terraces are made steelframe and steel decks, which will be attached to each existing floor of the structure through plates. The pergolas will provide stability against horizontal loads and also offer solar protection to the rooms. They will be movable through a set of cables and gears, which will have three positions: open position in winter, closed in summer, and retracted on rainy or windy days. This will give the building a dynamic facade. In the larger platforms, the pergola will be fixed and will support the cantilevered structure.



Stripping down the building by removing the outer skin of the existing facade and roof  
 Decompact the naked structure, creating spaces with greater visual amplitude  
 A new, energetically more efficient skin, more open to the exterior  
 New outdoor spaces in the air, embedding flying terraces into the structure  
 Insertion of a pergola system that will help support the weight of the terraces and function as sun protection

The succession of terraces and pergolas ultimately gives the building a completely renewed and dynamic exterior appearance. It will change depending on the viewpoint, the time of year, and the current weather conditions. It is important to see how this change in exterior skin significantly improves the conditions indoors, creating more permeable spaces connected to the outside and energetically more efficient. In this climate, it is increasingly important to have outdoor social spaces, especially for young people. That's why the residential program for common areas, such as kitchens, dining rooms, living rooms, and study rooms, are directly connected to these suspended platforms, providing residents with healthy spaces with views across the entire city of Barcelona.

