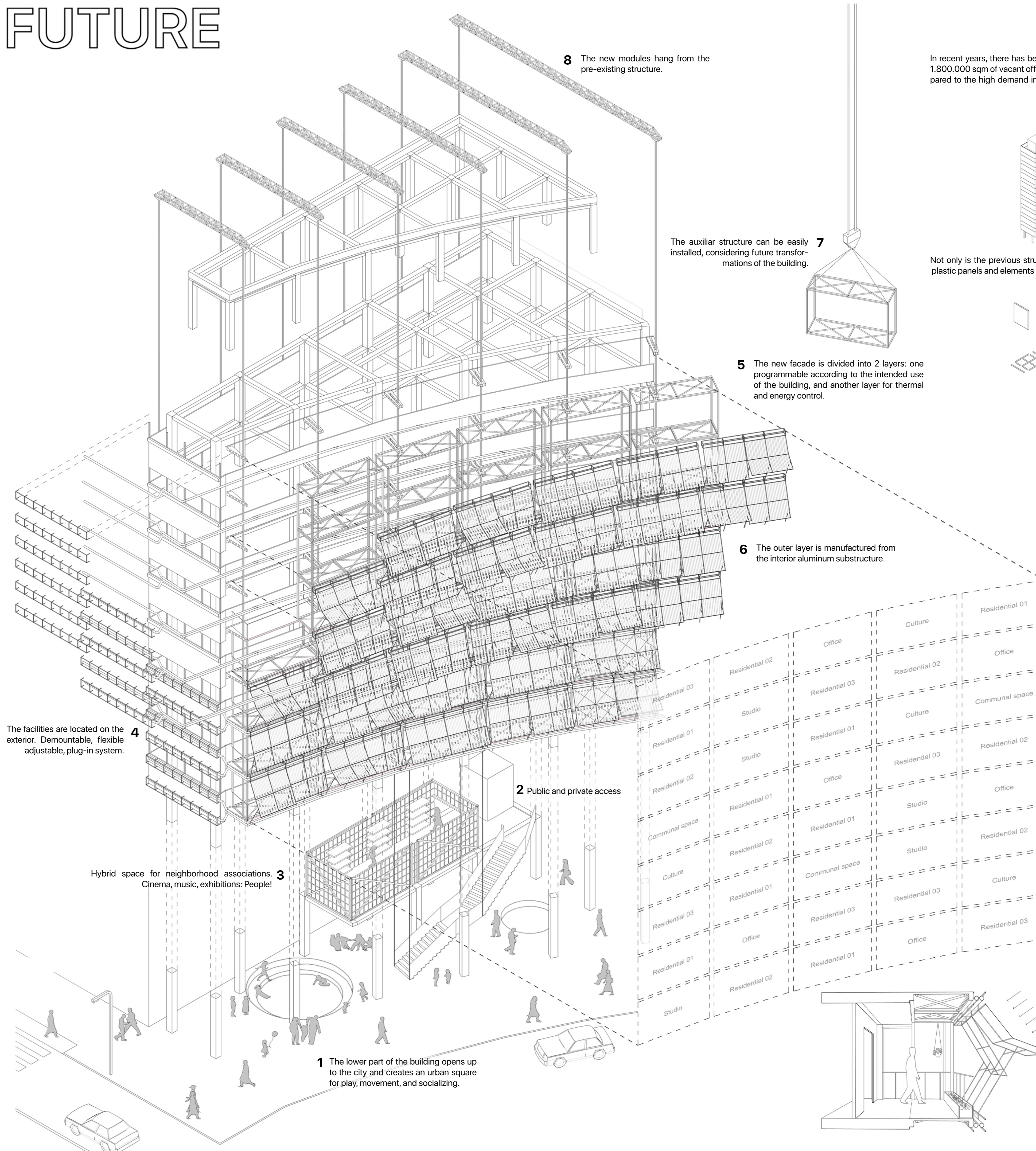


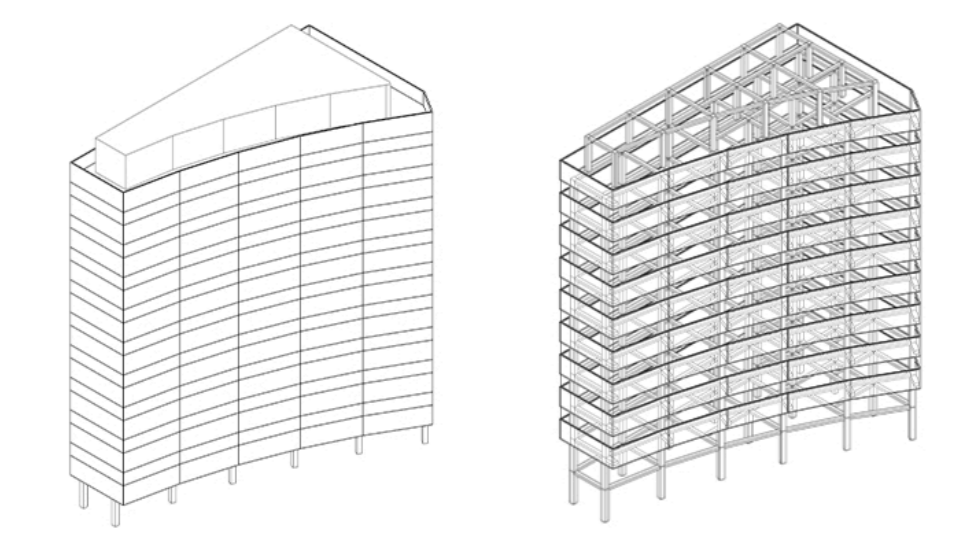
BACK TO THE FUTURE

ETSAM-UPM

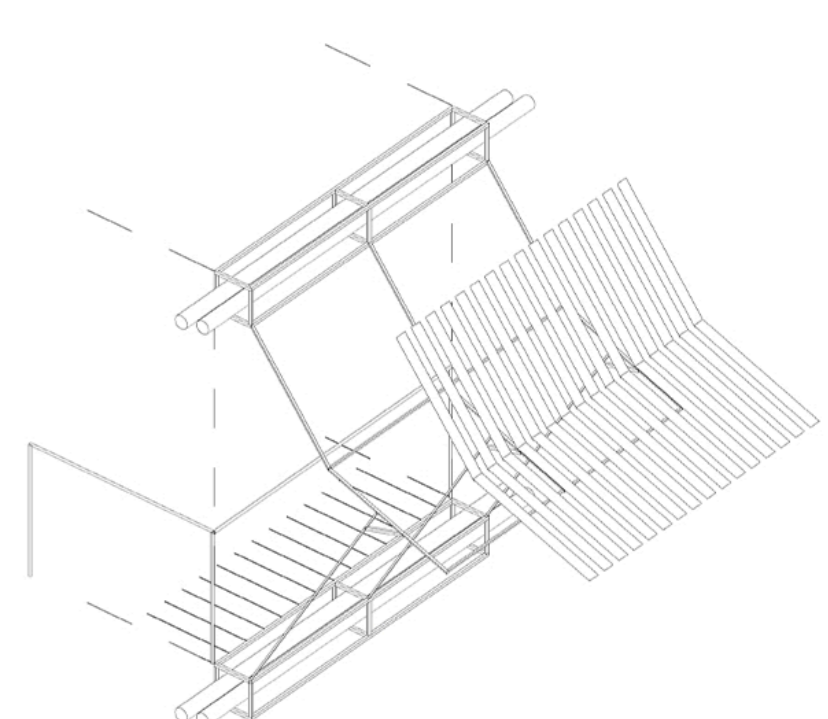
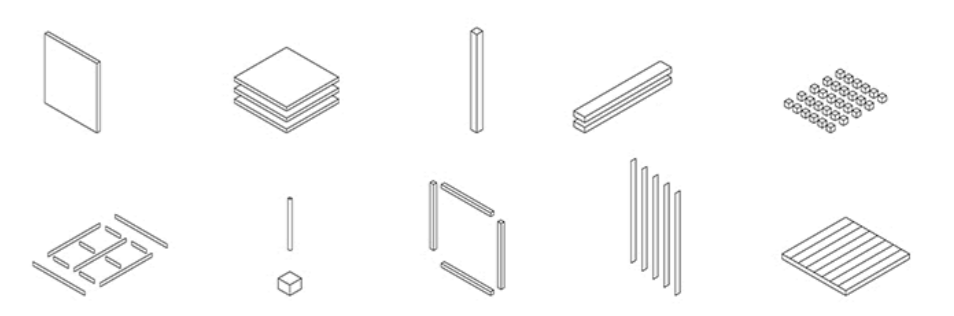


LOOKING BACK

In recent years, there has been a decrease in the use of office buildings: there are already 1.800.000 sqm of vacant office space in Madrid. Considering the shortage of housing compared to the high demand in the city, it is important to create a prototype for housing and other public uses within these huge vacant structures.

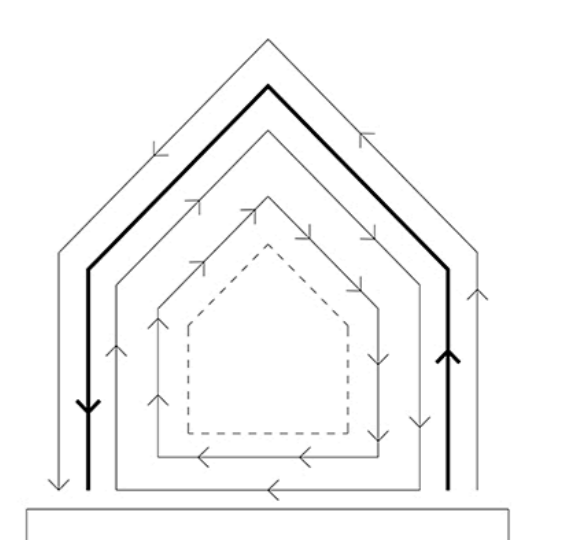


Not only is the previous structure used, but also other materials such as aluminum, PVC, plastic panels and elements of the substructure, can be used to minimize the material input.



LOOKING FORWARD

Just as we approach redesigning an outdated building, we should plan with the foresight that variables will shift in the future and design our prototypes with the flexibility to evolve accordingly.



By making each part independent, not only is it easier to make future changes, but each individual can also customize their unit according to their needs.

The prototype transforms the space from the exterior: the skin contains the technical components, achieving an interior blank space that can be adapted to different uses

