

BEFORE



Does the suit make the man? Renovating an anodyne office building, the proposal redefines Madrid's traditional "persiana alicantina" (curtained balcony) in a dynamic element that adapts the construction to climatic needs, taking advantage of natural light in winter and protecting from Madrid's growing heat in summer. The parasite, built in wood to reduce CO2 emissions, produces a warm atmosphere. The existing structure is intervened by removing slabs creating double height spaces, allowing the extra weight of the "new dress". Community spaces opened on the ground floor and rooftop, include a kindergarten, to foster social cohesion. The project revitalizes the Arganzuela neighborhood: a baroque layout designed by Gómez de Mora that lost its original charm over the past 50 years. It preserves historic identity with innovation and sustainability.



AFTER



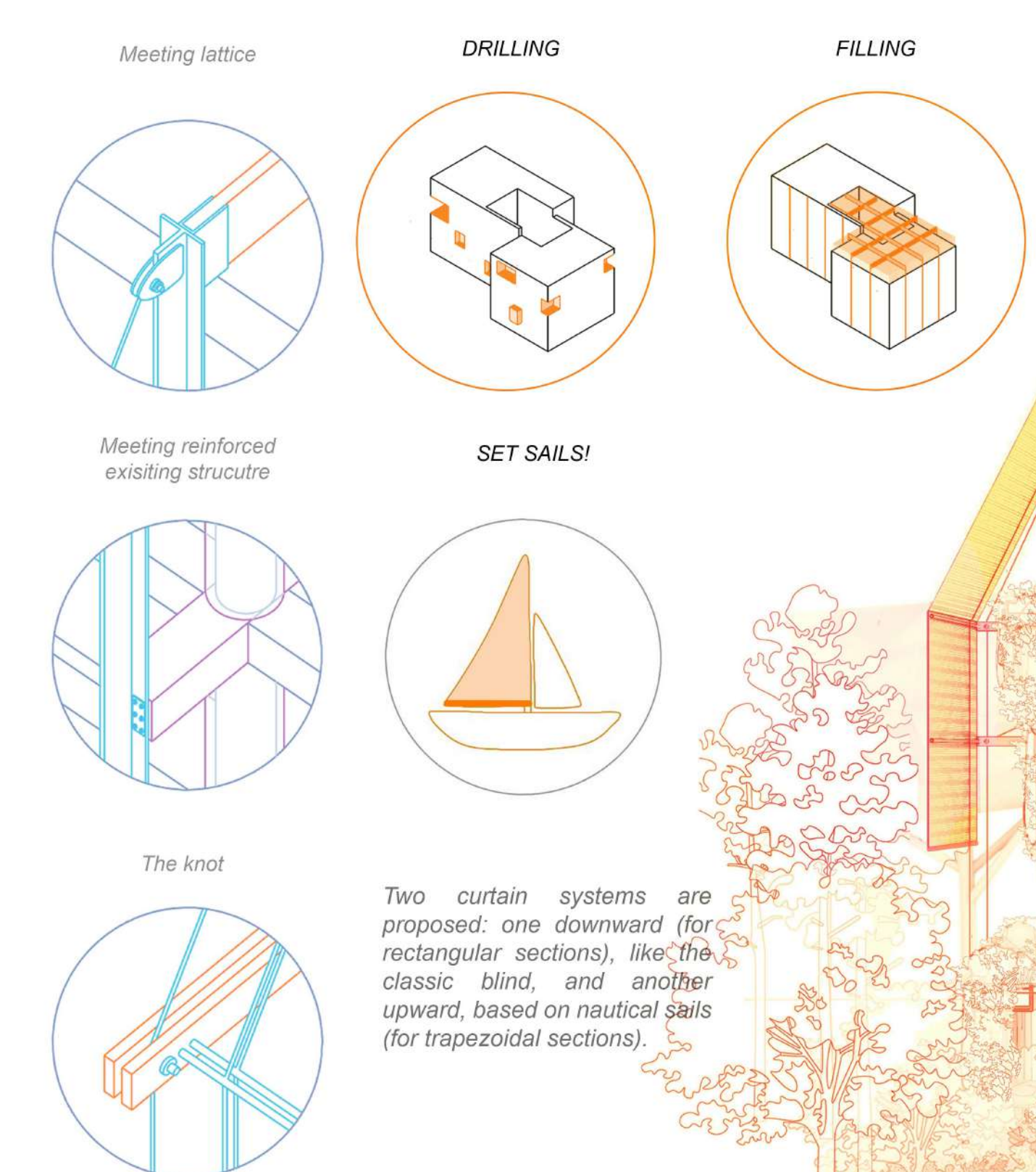
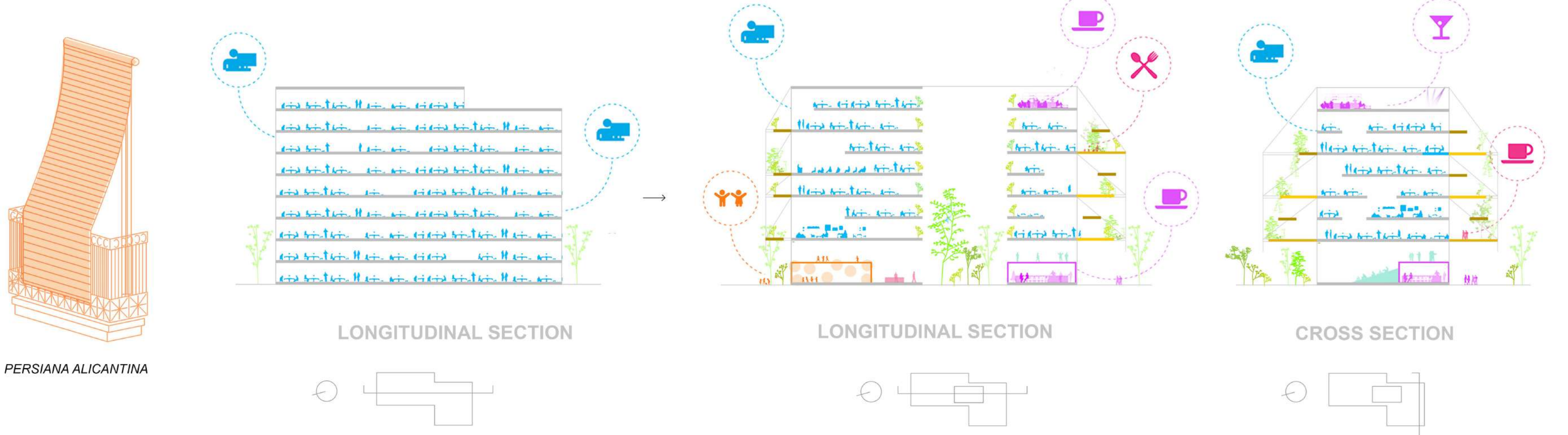
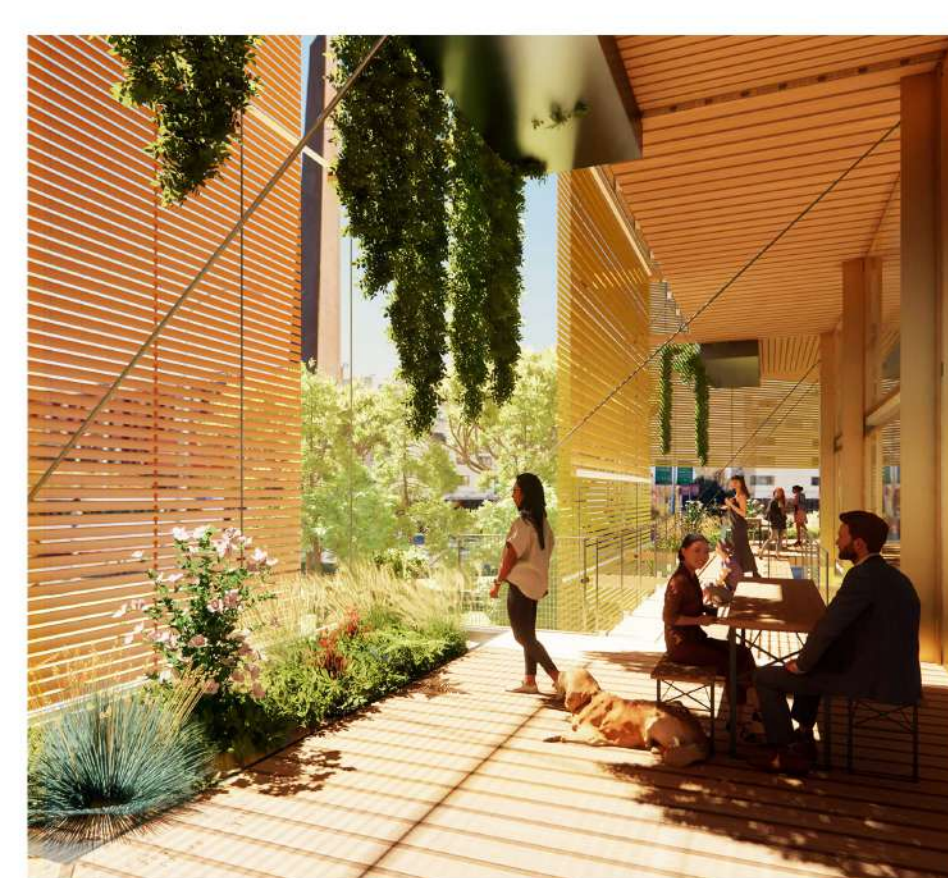
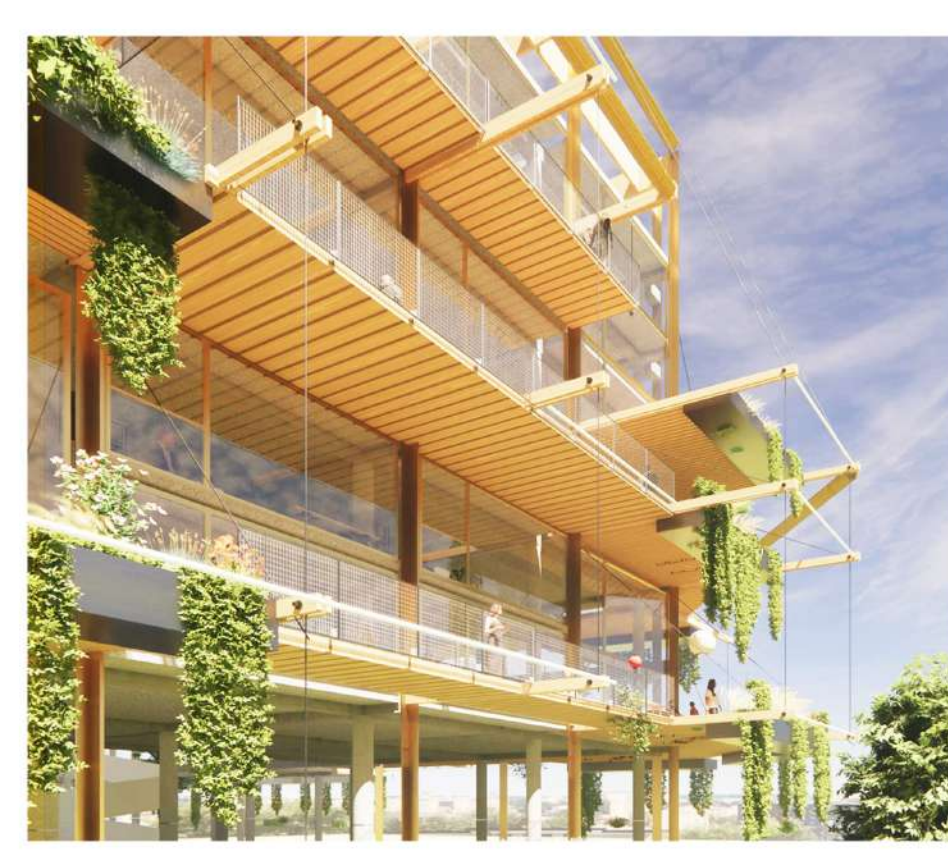
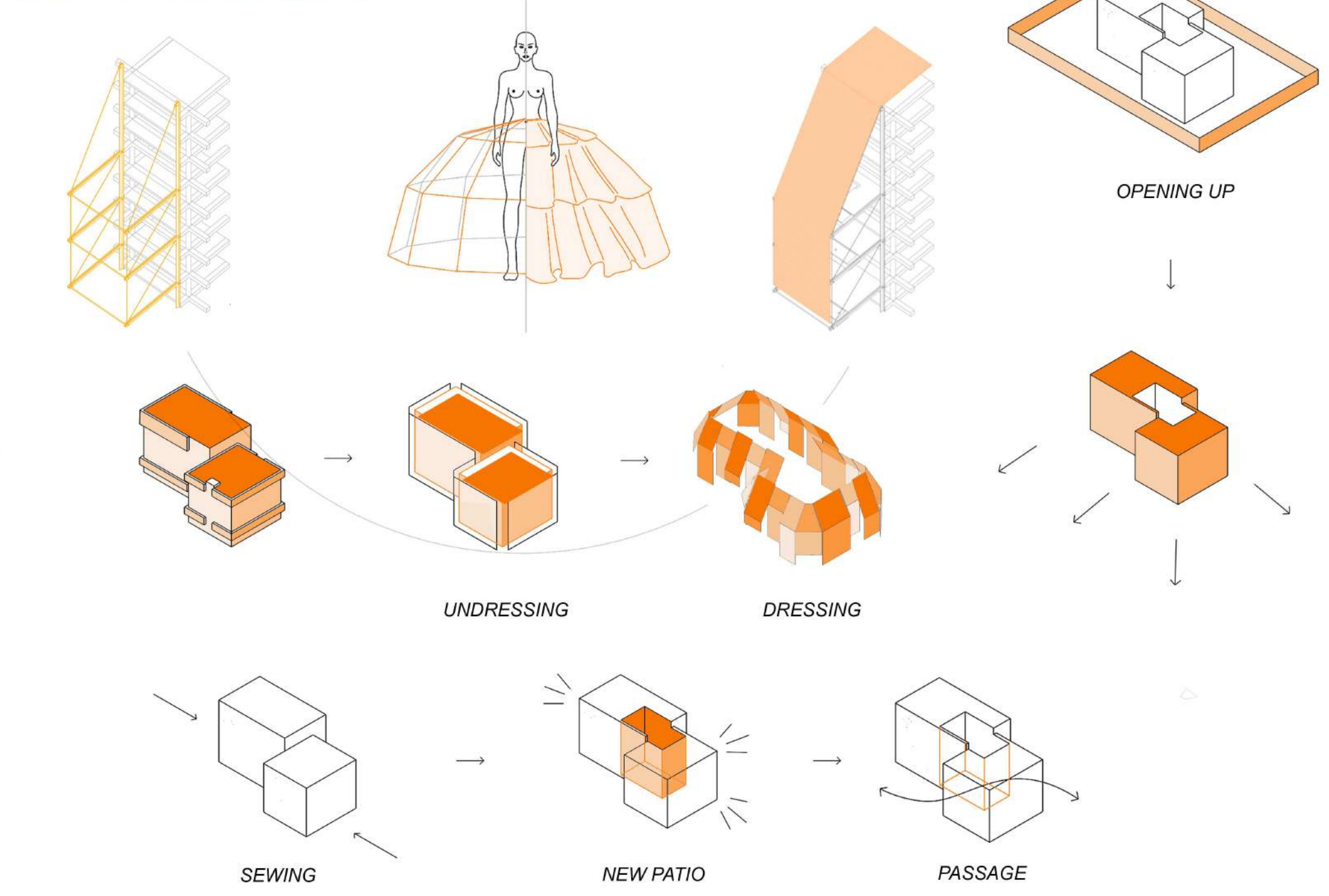
WINTER

AFTER



SUMMER

DRESS+



Two curtain systems are proposed: one downward (for rectangular sections), like the classic blind, and another upward, based on nautical sails (for trapezoidal sections).

