

**MIACA**

## estudio studio

**MACA** es una estructura abierta, en la que actualmente participan Christian Alvarez (1978), Noelia Alvarez (1980), Jorge Garrudo (1975) y Tomás Suarez (1979), todos ellos arquitectos de la Escuela de Arquitectura de Madrid.

**MACA** is an open structure in which Christian Alvarez (1978), Noelia Alvarez (1980), Jorge Garrudo (1975) and Tomás Suarez (1979) currently participate, all them architects by the ETSAM.



## perfil profile

**MACA** como colectivo de arquitectos que es, cree firmemente que el trabajo en equipo es la única manera de abordar la arquitectura en la sociedad contemporánea. Nuestro trabajo parte del minucioso análisis de las diversas oportunidades que cada proyecto ofrece, en diversas escalas y programas y siempre buscando en cada uno una perfecta combinación de frescura y profesionalidad.

**MACA** as a group of architects, firmly believes that teamwork is the only architectural approach in contemporary society. Our work starts from careful analysis of the various opportunities that each project offers, at different programs and scales, always looking for a perfect combination of freshness and professionalism.



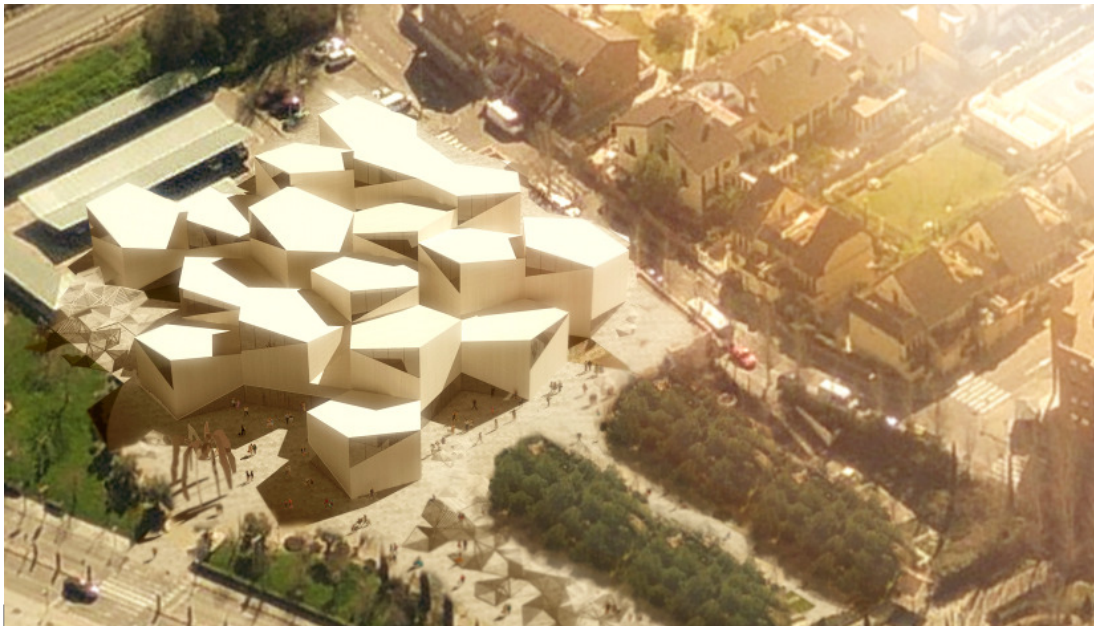


**MIACA**

## método method

Nuestro sistema de trabajo se basa en la formulación de una amalgama de propuestas y el diálogo continuo como parte fundamental en el proceso proyectual. No damos nada por hecho, ni descartamos ninguna posibilidad a priori, sino que las probamos y combinamos todas. Solo en este proceso de continuo diálogo constructivo encontramos las mejores soluciones.

Our working system is based on an amalgam of proposals and ongoing dialogue as a fundamental part in the designing process. We try not to take anything for granted, not a easy given way, but to try and combine all possible solutions. Only in this ongoing process of constructive dialogue and brain storming we happen to find the best solutions.



# Causeway

MUSEO DE LA ESCULTURA  
DE LEGANÉS  
LEGANES MUSEUM  
OF SCULPTURE

programa / program:  
museum extension, offices, restaurant

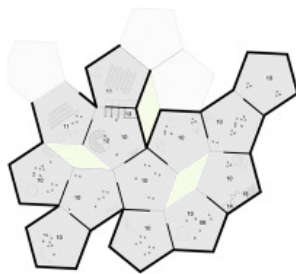
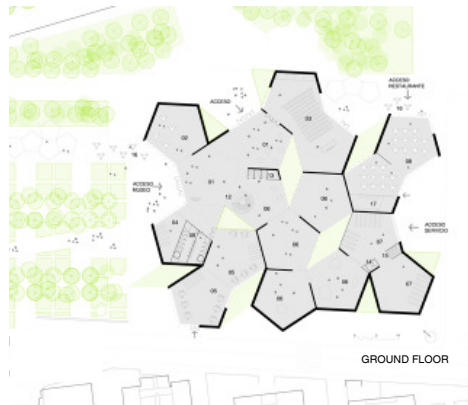
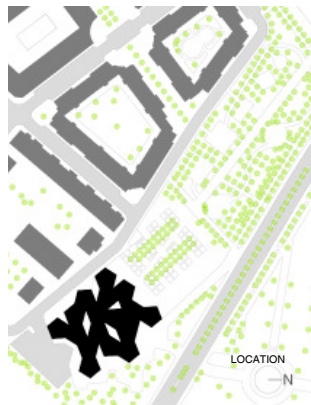
tipo / type:  
competition proposal

MACA equipo / team:  
Christian Alvarez, Jorge Garrudo, Tomás  
Suarez

dónde / where:  
Leganés, Madrid

tamaño / size:  
4.000 m2

cuándo / when:  
November 2011







# Liesma

CONCURSO INTERNACIONAL  
DE IDEAS HOTE LIESMA  
LIESMA HOTEL  
INTERNATIONAL DESIGN  
IDEAS COMPETITION

programa / program:

**Hotel renovation, extension and improvement.**

tipo / type:

**competition proposal**

MACA equipo / team:

**Christian Alvarez, Jorge Garrudo**

dónde / where:

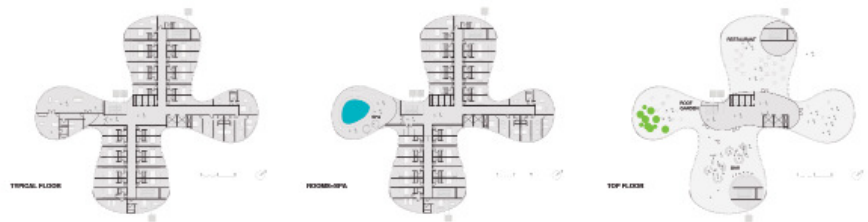
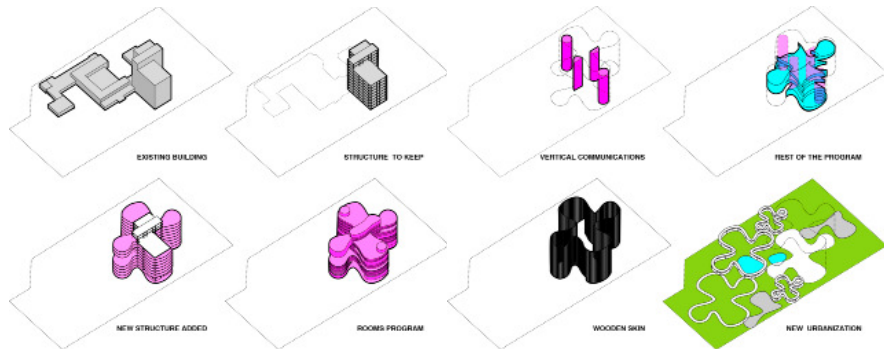
**Riga, Latvia**

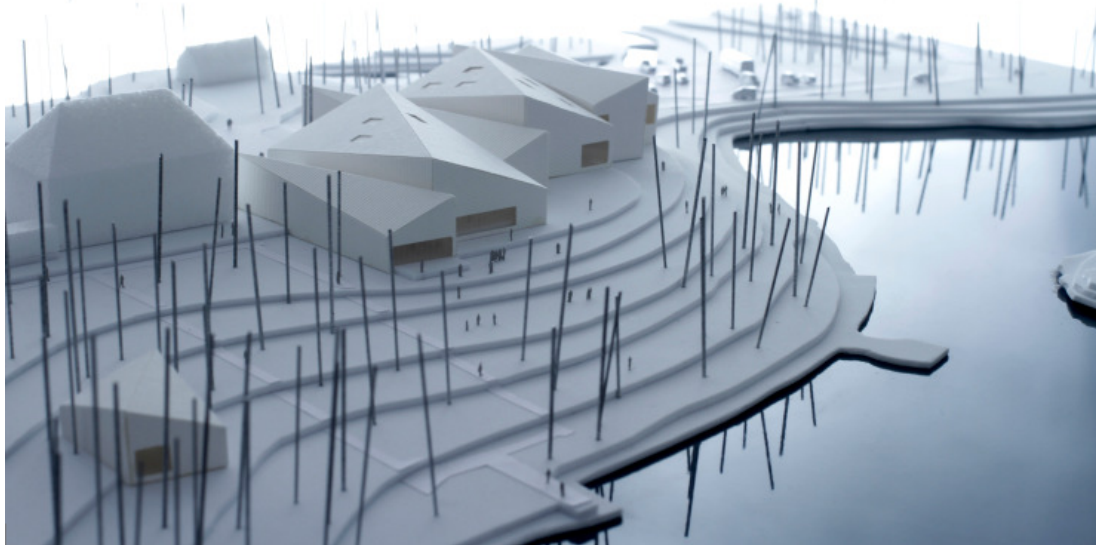
tamaño / size:

**4.000 m2**

cuándo / when:

**November 2011**





# Arthouse

AMPLIACIÓN DEL MUSEO  
GÖSTA SERLACHIUS  
GÖSTA SERLACHIUS  
MUSEUM EXTENSION

program:  
museum extension, workshops, restaurant.

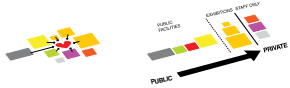
type:  
competition proposal

MACA team:  
Christian Alvarez, Jorge Garrudo, Tomas  
Suarez

where:  
Mantaa, Finland

size:  
6.000 m2

when:  
March 2011



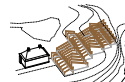
program analysis



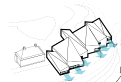
heights required



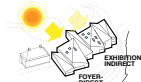
tilted roofs for snow



wooden structure



landscape views



skylights

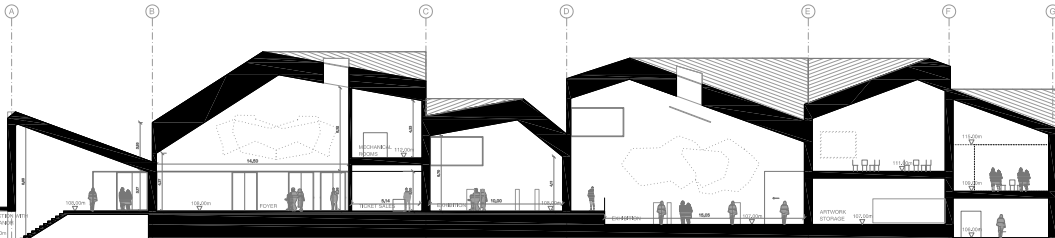
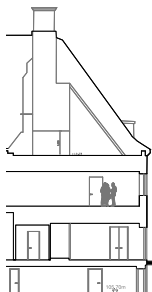
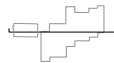


compact

VS

dispersion

art house







# 107

## VIVIENDA SOCIAL EN ALTURA SOCIAL HOUSING IN HEIGHT

program:  
105 social housing units

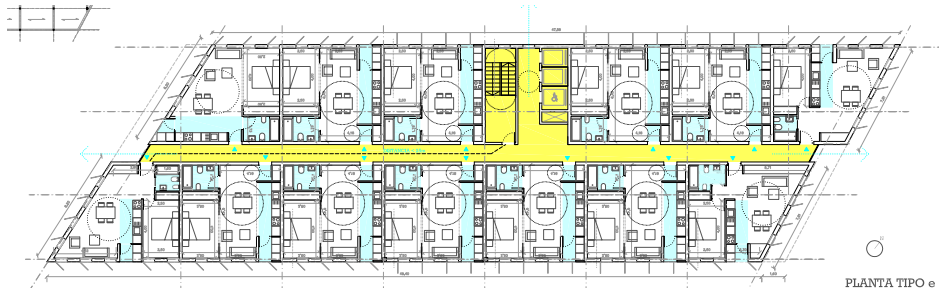
type:  
competition proposal

MACA team:  
Christian Alvarez, Jorge Garrudo

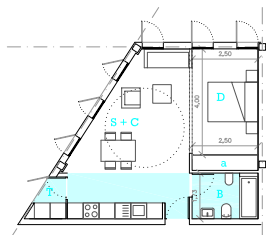
where:  
Madrid, Spain

size:  
5.800 m<sup>2</sup>

when:  
February 2011



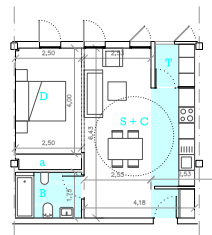
PLANTA TIPO e 1/200



VIVIENDA TIPO 5	
S+C SALÓN COCINA	24,12 m <sup>2</sup>
D DORMITORIO	10 m <sup>2</sup>
B BAÑO	3,90 m <sup>2</sup>
T TENEDERO (50% 1,72m <sup>2</sup> /2)	0,86 m <sup>2</sup>
TOTAL SUP OTIL	40,80 m <sup>2</sup>



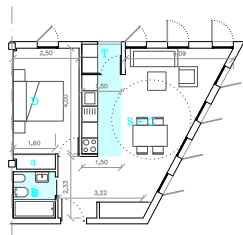
VIVIENDA ESQUINA A



VIVIENDA TIPO 1	
S+C SALÓN COCINA	24,23 m <sup>2</sup>
D DORMITORIO	10 m <sup>2</sup>
B BAÑO	4,33 m <sup>2</sup>
T TENEDERO (50% 2,45m <sup>2</sup> /2)	1,22 m <sup>2</sup>
TOTAL SUP OTIL	41,28 m <sup>2</sup>



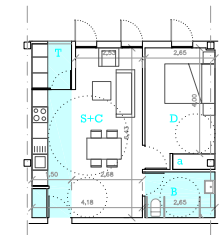
VIVIENDA TIPO



VIVIENDA TIPO 4	
S+C SALÓN COCINA	26,20 m <sup>2</sup>
D DORMITORIO 1	10 m <sup>2</sup>
B BAÑO	2,80 m <sup>2</sup>
T TENEDERO (50% 1,80m <sup>2</sup> /2)	0,90 m <sup>2</sup>
TOTAL SUP OTIL	40,83 m <sup>2</sup>



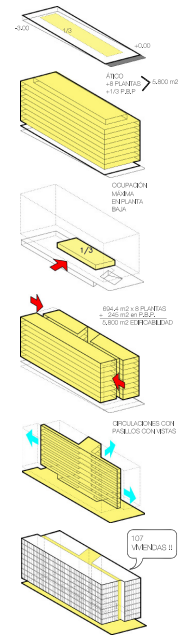
VIVIENDA ESQUINA B



VIVIENDA ADAPTADA 1	
S+C SALÓN COCINA	24,21 m <sup>2</sup>
D DORMITORIO 1	11,17 m <sup>2</sup>
B BAÑO	0,96 m <sup>2</sup>
T TENEDERO (50% 2,55m <sup>2</sup> /2)	1,27 m <sup>2</sup>
TOTAL SUP OTIL	42,29 m <sup>2</sup>



VIVIENDA ADAPTADA





# CampRedó

SEGUNDA VIDA PARA EL  
BARRIO  
SECOND LIFE FOR THE  
NEIGHBORHOOD

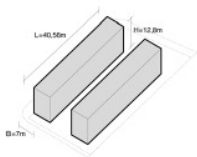
program:  
**Day care center and residence for the elderly**  
type:  
**competition proposal**

MACA team:  
**Christian Alvarez, Jorge Garrudo**

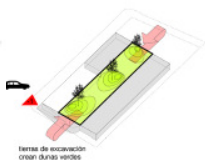
where:  
**Mallorca, Spain**

size:  
**1.200 m<sup>2</sup>**

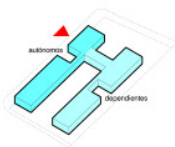
when:  
**March 2010**



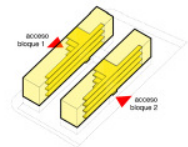
MANDATORY VOLUME



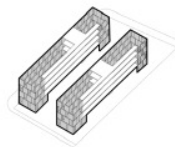
PARKING+COURTYARD



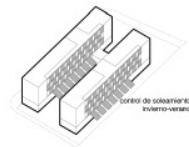
DAY CENTER



RESIDENCE PROGRAMME



PREFEB PANELS



CANOPY



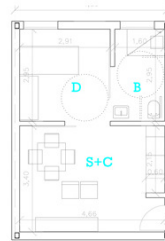
FINAL VOLUME



PLANTA BAJA -CENTRO DE DIA

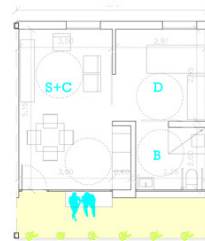


PLANTA TIPO DE VIVIENDAS



VIVIENDA TIPO 1 (12 uds)

S+C	SALÓN COCINA	15,95 m <sup>2</sup>
D	DORMITORIO	8,85 m <sup>2</sup>
B	BAÑO	5,20 m <sup>2</sup>



VIVIENDA TIPO 2 (24 uds)

S+C	SALÓN COCINA	16,70 m <sup>2</sup>
D	DORMITORIO	8,72 m <sup>2</sup>
B	BAÑO	4,72 m <sup>2</sup>

VIVIENDAS TIPO



# Ciudadela

NUEVA VIDA PARA EN EL CENTRO HISTÓRICO  
NEW LIFE IN THE HISTORIC CITY CENTER

program:  
**Public Music and Dance School**

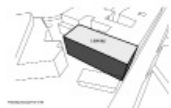
type:  
**competition proposal**

MACA team:  
**Christian Alvarez, Noelia Alvarez, Jorge Garrudo.**

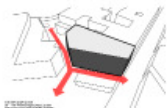
where:  
**Ciudadela, Menorca**

size:  
**1.200 m2**

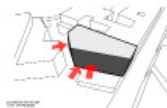
when:  
**March 2010**



program required



adaptation to circulations



adaptation to program



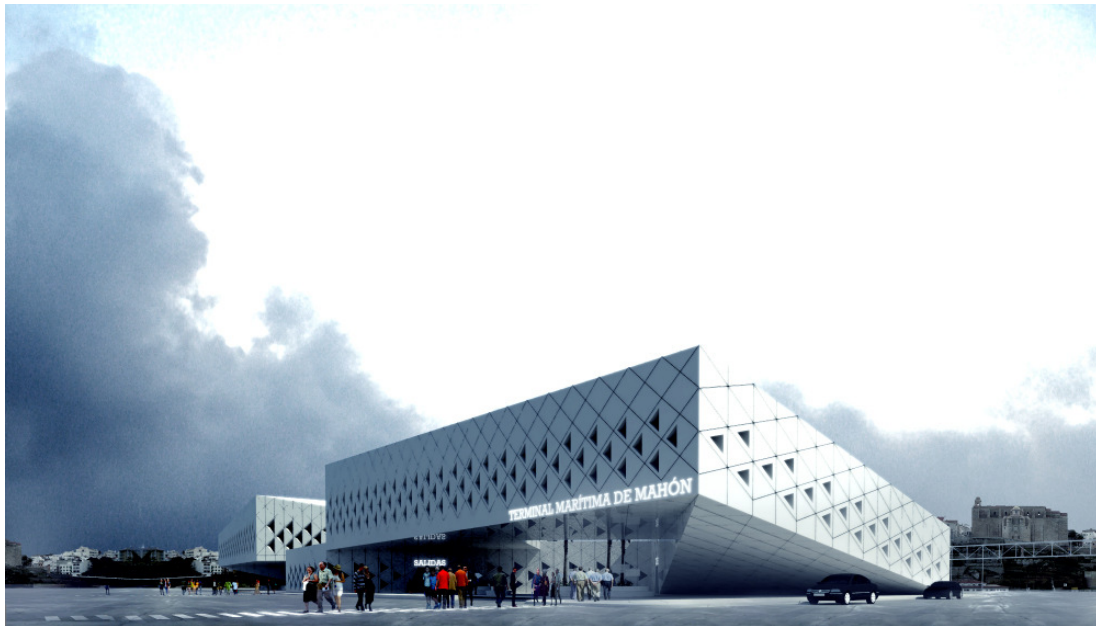
exterior spaces



final volume







# Mahón 2.0

INTERNATIONAL  
FERRIES  
TERMINAL

program:  
International Ferries terminal.

type:  
competition proposal

MACA team:  
Christian Alvarez, Jorge Garrudo, Noelia Alvarez

where:  
Menorca, Spain

size:  
2.000 m<sup>2</sup>

when:  
July 2009







# Blai Bonet

REFURBISHMENT AND  
EXTENSION FOR THE  
BLAI BONET MUSEUM

program:  
museum extension

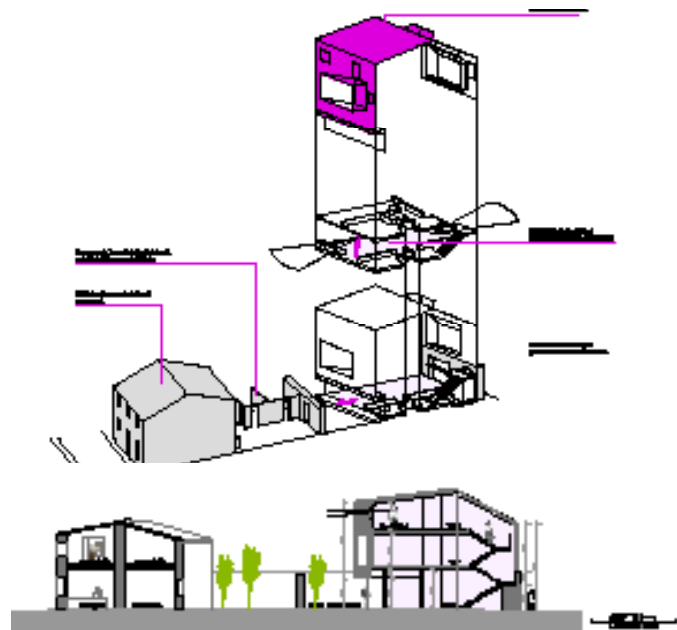
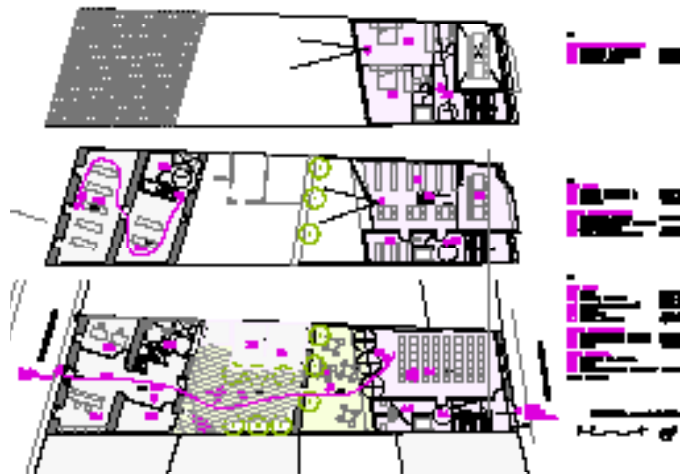
type:  
MACA estudio de arquitectura

MACA team:  
Christian Álvarez, Noelia Álvarez, Jorge  
Garrudo

where:  
Santanyí, Mallorca

size:  
340 m2

when:  
September 2009





# Porreres

CENTRO DE SALUD  
HEALTH CARE CENTRE

program:  
Health care center

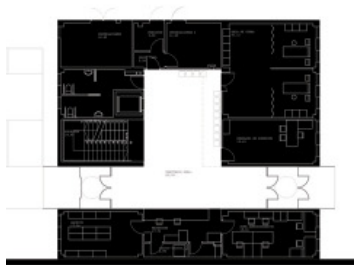
type:  
COMPETITION-FIRST PRIZE-BUILT

MACA team:  
Christian Alvarez, Jorge Garrudo, Noelia Alvarez

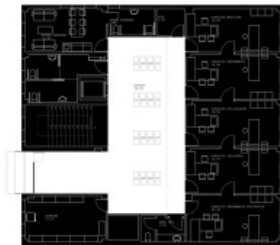
where:  
Mallorca, Spain

size:  
1.2000 m2

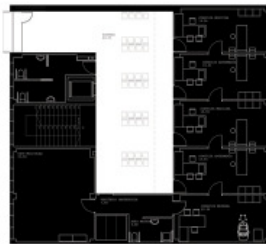
when:  
March 2009 - March 2011



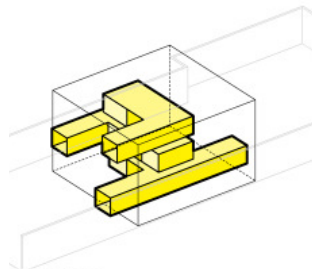
GROUND FLOOR



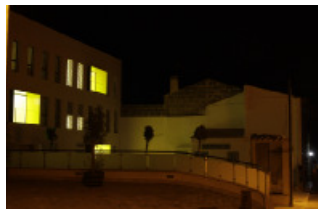
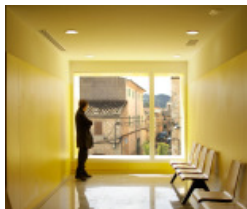
FIRST FLOOR



SECOND FLOOR



PUBLIC AREAS





# Ibiza

PATIO DE MANZANA  
MEDITARRANEO PERFORADO  
PERFORATED MEDITERRANEAN  
COURTYARD

program:

**19 social housing units**

type:

**competition - SECOND PRIZE**

MACA team:

**Christian Alvarez, Noelia Alvarez, Cristina Salinas**

where:

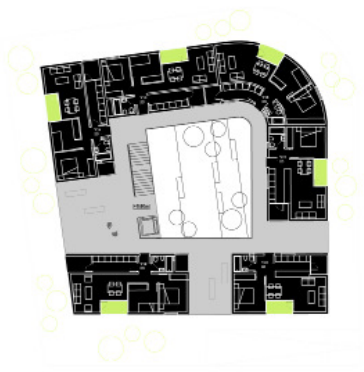
**Ibiza, Spain**

size:

**1.000 m2**

when:

**December 2007**



# 1.17

NO SOLO UN EDIFICIO SINO UN  
NUEVO BARRIO  
NOT A BUILDING BUT A NEW  
NEIGHBOURHOOD

program:  
420 social housing units

type:  
competition - SECOND PRIZE

MACA team:  
Christian Alvarez, Jorge Garrudo, Tomas  
Suarez

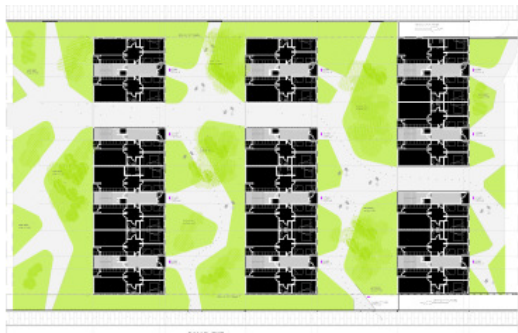
where:  
Madrid, Spain

size:  
29.400 m2

when:  
March 2007







PROGRAMA ACCESIBLE:

- 01 Salón 1 60,00 m<sup>2</sup>
- 02 Sala de conferencias 60,00 m<sup>2</sup>
- 03 Sala de exposiciones 60,00 m<sup>2</sup>
- 04 Sala de exposiciones 60,00 m<sup>2</sup>
- 05 Sala de exposiciones 60,00 m<sup>2</sup>

PROGRAMA ESTANDAR:

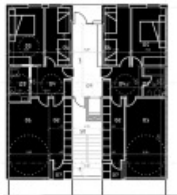
- 06 Sala de exposiciones 60,00 m<sup>2</sup>
- 07 Sala de exposiciones 60,00 m<sup>2</sup>
- 08 Sala de exposiciones 60,00 m<sup>2</sup>
- 09 Sala de exposiciones 60,00 m<sup>2</sup>

PROGRAMA P. ALTO:

- 10 Sala de exposiciones 60,00 m<sup>2</sup>
- 11 Sala de exposiciones 60,00 m<sup>2</sup>
- 12 Sala de exposiciones 60,00 m<sup>2</sup>
- 13 Sala de exposiciones 60,00 m<sup>2</sup>

PROGRAMA ESTANDAR:

- 14 Sala de exposiciones 60,00 m<sup>2</sup>
- 15 Sala de exposiciones 60,00 m<sup>2</sup>



PROGRAMA ACCESIBLE:

- 01 Salón 1 60,00 m<sup>2</sup>
- 02 Sala de conferencias 60,00 m<sup>2</sup>
- 03 Sala de exposiciones 60,00 m<sup>2</sup>
- 04 Sala de exposiciones 60,00 m<sup>2</sup>
- 05 Sala de exposiciones 60,00 m<sup>2</sup>

PROGRAMA ESTANDAR:

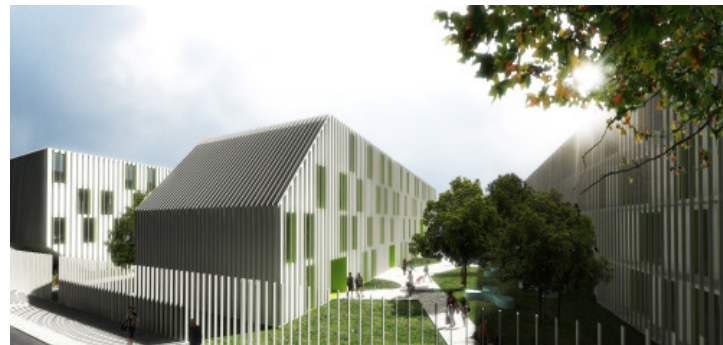
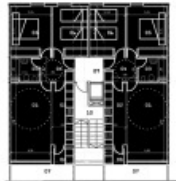
- 06 Sala de exposiciones 60,00 m<sup>2</sup>
- 07 Sala de exposiciones 60,00 m<sup>2</sup>
- 08 Sala de exposiciones 60,00 m<sup>2</sup>
- 09 Sala de exposiciones 60,00 m<sup>2</sup>

PROGRAMA P. ALTO:

- 10 Sala de exposiciones 60,00 m<sup>2</sup>
- 11 Sala de exposiciones 60,00 m<sup>2</sup>
- 12 Sala de exposiciones 60,00 m<sup>2</sup>
- 13 Sala de exposiciones 60,00 m<sup>2</sup>

PROGRAMA ESTANDAR:

- 14 Sala de exposiciones 60,00 m<sup>2</sup>
- 15 Sala de exposiciones 60,00 m<sup>2</sup>





# trabajos works

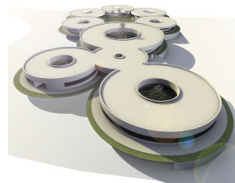
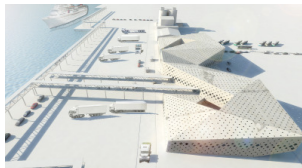
ALIAS	PROGRAM	CLIENT	WHERE	WHEN	SIZE	TYPE
Leganés Sculptura Museum	museum	Museo de la escultura de Leganés	Menorca-Spain	2011	3.000	competition
Liesma Design Hotel	hotel	Liesma hotel	Riga, Latvia	2011	3.000	competition
Serlachius Gösta	museum	Serlachius Gösta Foundation	Marntaa, Finland	2011	4.000	competition
107 VPO Ntra Sra. de los Ángeles	social housing	EMV	Madrid, Spain	2011	5.800	competition
Camp Redó	Elderly house	Imvisa	Mallorca, Spain	2011	1.500	competition
84 Social Housing in Villaverde	social housing	EMV	Madrid, Spain	2010	4.000	competition
School of Music and Dance	arts school	Menorca city	Menorca-Spain	2009	1.500	competition
Elai Bonet Museum	museum	Elai Bonet Foundation	Mallorca, Spain	2009	500	competition
International Ferries Terminal, Menorca	infrastructure	Mahón city	Menorca, Spain	2009	2000	competition
Centre for autism, Toledo	special center	Junta de Castilla la Mancha	Toledo, Spain	2008	1000	competition
Medical Centre, Mallorca. First Prize	medical center	Servei Salut Balear	Mallorca, Spain	2008	1000	competition - 1st prize
New Temple, Madrid	parish	Hercosa	Madrid, Spain	2008	3.600	competition
Center for autism	special center	Junta de Castilla la Mancha	Toledo, Spain	2008	3.700	competition
Parque de los Pinos, Madrid	catering		Madrid, Spain	2008	1.300	competition
Santucar	social housing	Junta de Andalucía	Sevilla, Spain	2008	1.200	competition
Velez Rubio	social housing	Junta de Andalucía	Sevilla, Spain	2008	1.500	competition
Ubiba	social housing		Eibar, Spain	2008	3.200	competition
Pere Garau	social housing	Imvisa	Mallorca, Spain	2008	2.500	competition - Selected
Son Dameto	kindergarden		Mallorca, Spain	2008	1.500	competition
19 VPO en Can Cantó	social housing	Imvisa	Ibiza, Spain	2007	1000	competition - Finalist
European 9. Riga. Letonia	urban-housing	European	Riga, Latvia	2007	10.00	competition - Selected
420 Social Housing	social housing	EMV	Madrid, Spain	2007	20.000	competition - Mention
Transite Project	ephemeral	Huelva city	Huelva, Spain	2006	500	competition - 1st prize
European8	urban-housing	European8	Kristianstad, No	2005	5Ha	competition



CONTACT:

MACA estudio de arquitectura  
c/ Torpedero Tucumén 29  
28016 Madrid  
SPAIN

+34 91 359 80 55  
estudio@macaestudio.es  
www.macaestudio.es

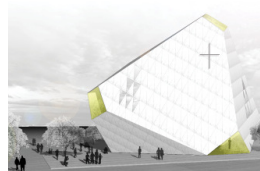


PARTNERS:

Christian Alvarez  
ch@macaestudio.es  
+34 677 39 56 64

Noelia Alvarez  
noelia@macaestudio.es  
+34 678 88 38 40

Jorge Garrudo  
jorge@macaestudio.es  
+34 618 04 31 61



FOLLOW US:



[www.macaestudio.es](http://www.macaestudio.es)