

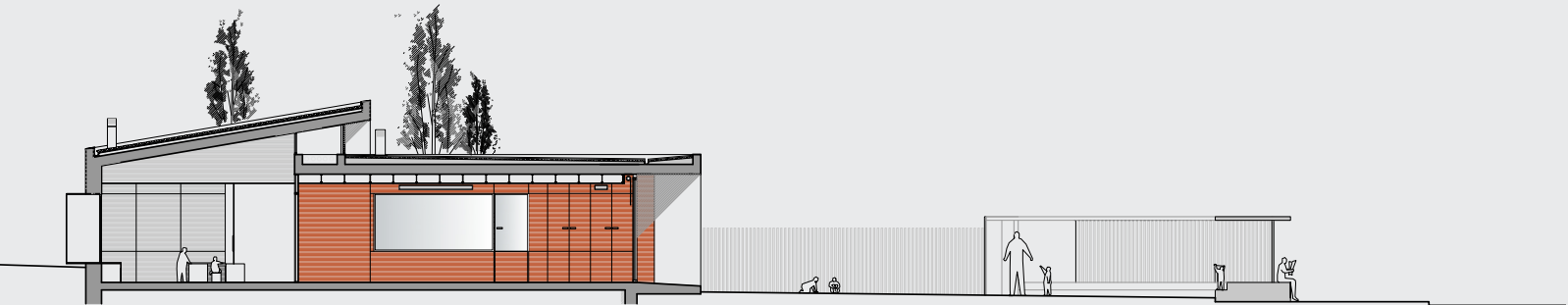


PLANTA EMPLAÇAMENT
E: 1/7500

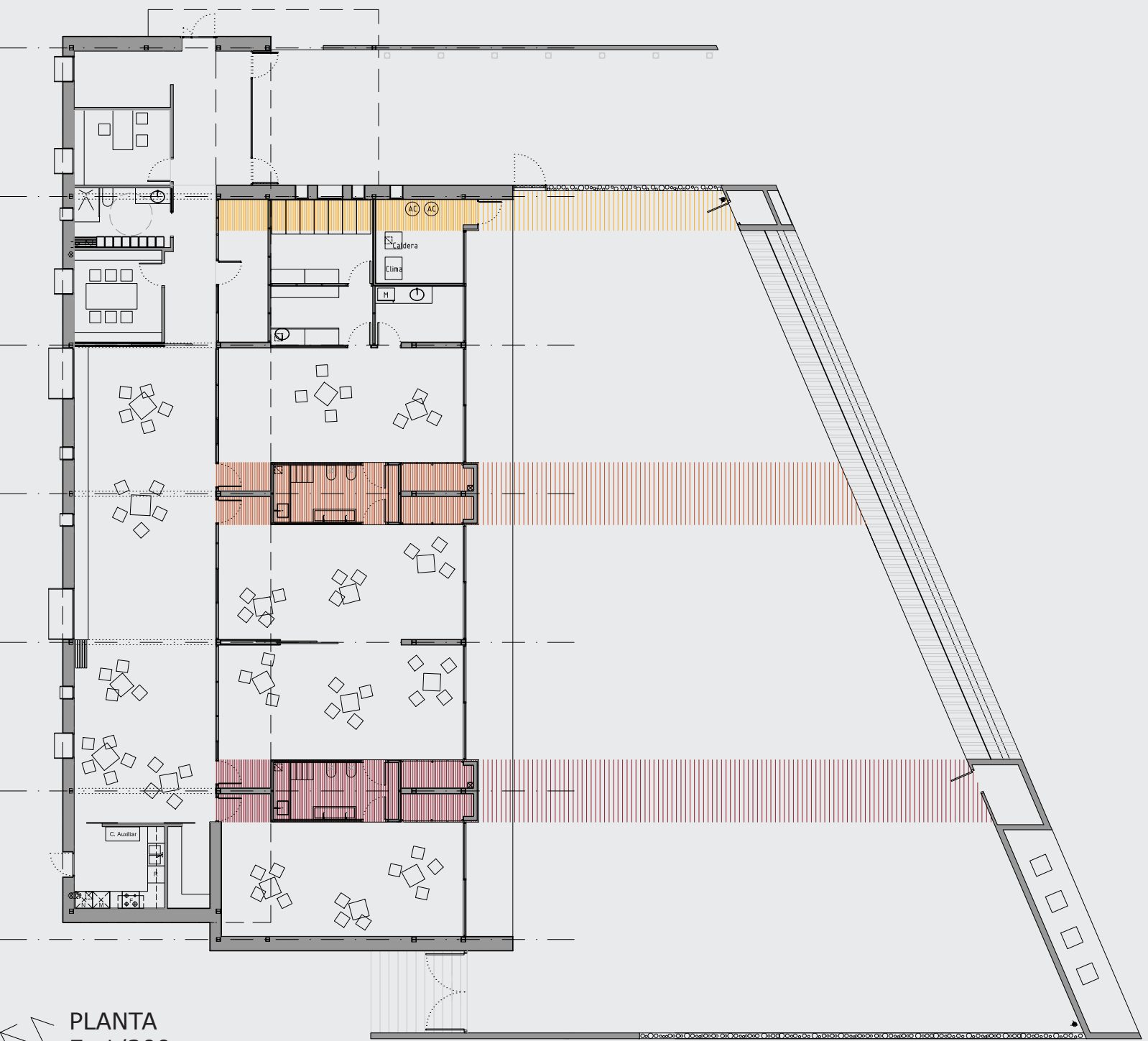
In Toledo, the first great steps taken to solve the difficulties of accessibility to the historical center has been the construction of a large parking garage for 400 cars in the Paseo de Recaredo and a contiguous mechanical escalator that transfer the pedestrians to the high part of the city.

The mechanical stairways begin their ascent after crossing a short passage placed under the foundations of the medieval wall. This passage is a new gate to the city, alternative to those of the Bisagra and the Cambrón.

The realization of the project presented considerable difficulties that forced to work with the maximum care and wisdom. The hillside of the Rodadero, on which the stairways are situated, is a land formed by the continuous accumulation of brashes along the centuries. The new foundations had to be descended 30 metres until reaching the firm rock. The medieval ramparts have been respected in their entirety by having the staircase enter at a level below their foundations. In order to diminish the visual and environmental impact, the voluminous construction that harbors the stairways has been incrustated in the hillside. The whole work has been built using a ochre concrete, in the tone of the typical architecture of Toledo.



SECCIÓ TRANSVERSAL
E: 1/200



PLANTA
E: 1/200

