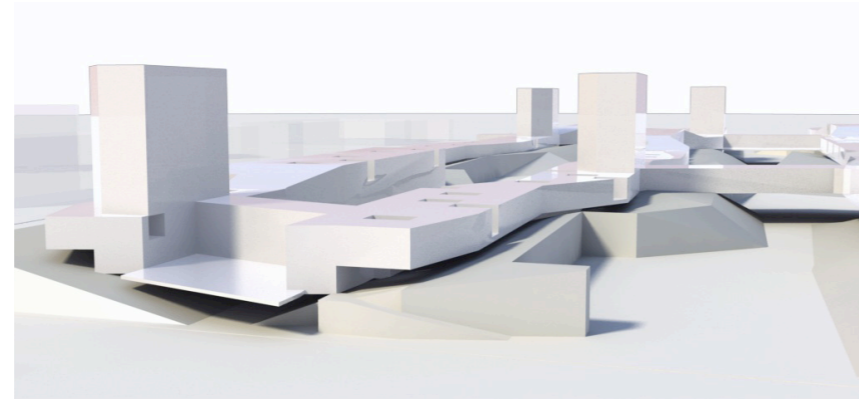
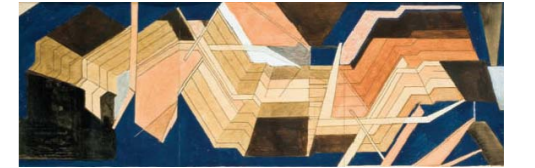


PZ954

**CAPELLE AAN
DEN IJSEEL**



**SYLVARUM
VARIA 01**
NEDERLAND EUROPA N11



1954. Pablo Palazuelo. SYLVARUM VARIA. COMPOSITION.

FIRST APPROACH

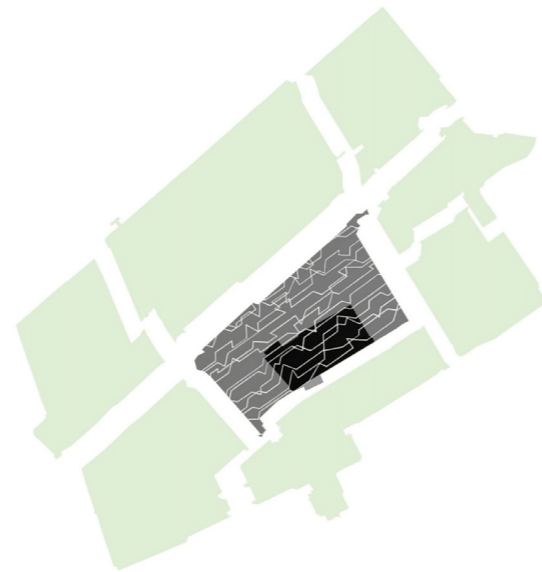
Territory isn't a previous piece of information anymore, but the result of permanent transformation processes, a complex system in constant evolution with hardly predictable changes.

City, rural settlements or conurbations are increasingly fragmented and give rise to a plurality of partial territories: of knowledge, of production, of economy, or of social relations.

Our times are characterized by uncertainty, interdependence and growing transformation. Such transformation dynamics of our cities and territories requires the consideration of different backgrounds, meeting the combination of elements as time, space and strategies.

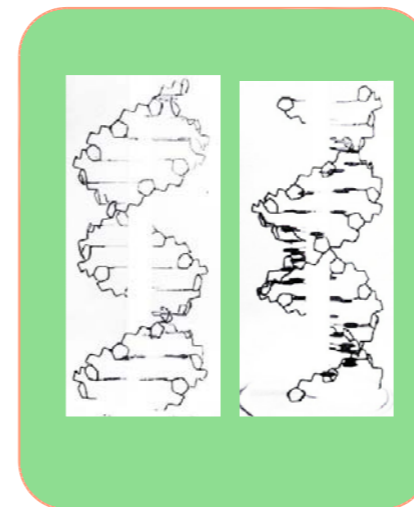
Faced with changing scenes, the urban project demands an open-minded and experimental professional attitude; a new approach, probably less linear, more tentative

than definitive, to hypothesis in continuous revision and not based on immutable assumptions. The contemporary reconceptualization of Rotterdam offers a policentric area understood as 'new centrality'. The area at hand, Hoven 2, falls within the context of this 'new

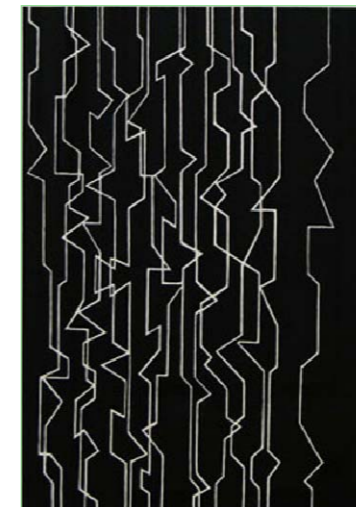


centrality'.

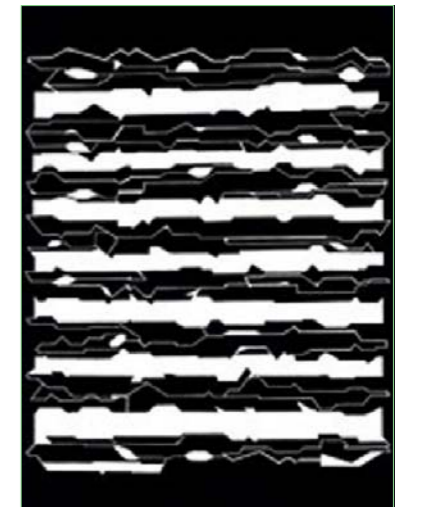
The appropriateness of the research through the project, the process of «research through design» looks obvious today, but meant a deep reflection in the Delft University of Technology some years ago.



1954
Discovery of DNA Structure
First Sketches, Linus Pauling



1954
Pablo Palazuelo
MÚSICA I



1954
Pablo Palazuelo
SYLVARUM VARIA II

PABLO PALAZUELO. Madrid 1916-2007. Spanish painter, engraver and sculptor. Palazuelo was one of the key figures of Spanish art in the second half of the twentieth century.

The development of abstraction and the use of geometry in his work are strongly related to a rational process based on a discovery -not invention- of new shapes. This constant discovery that guides his work results in a tension through the endless variations of the shapes.

PZ954

CAPELLE AAN DEN IJSEEL

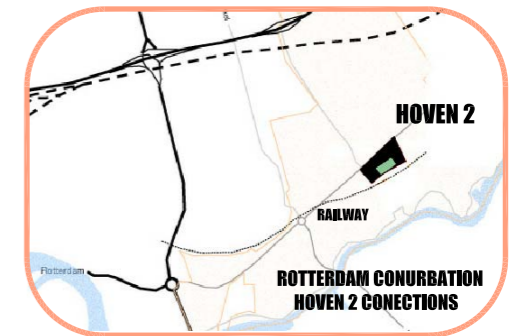
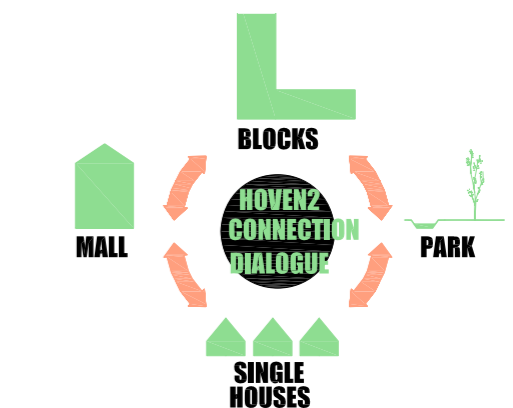
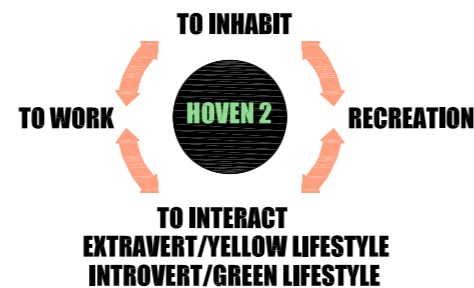
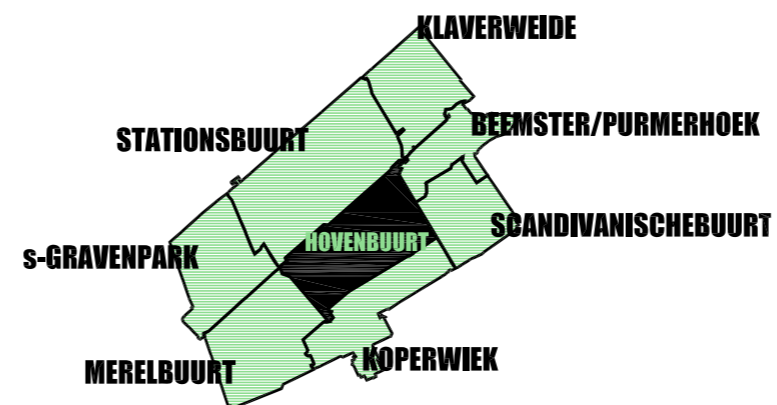
HOVEN 2 PLANING PROJÉT

The research through the project means creating knowledge by studying the effects of changing systematically projective solutions and its context.

The Hoven2 distribution project tries to lay down the connection and conversation between the different urban tissues surrounding. In this respect the neighbourhood project is understood as a structure of connection that at the same time settles the required housing accommodation (density of about 80 to 86 dwellings per hectare, approximately 315 dwellings with ground level access and focus on those.) It must be highlighted that the number of dwellings required imposes a high occupation ratio.

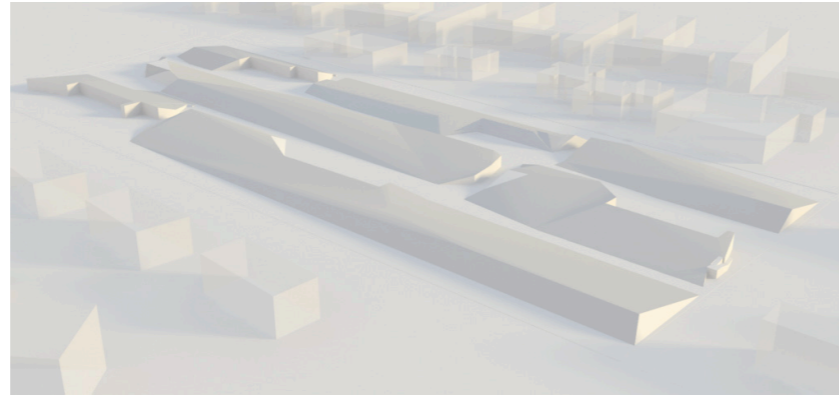
The 5.0 ha in study (Hoven2) are located in the heart of a convergence of urban situations. We understood them as a opportunity of connection and resolution of conflicts (traffic, social relations, accommodation, recreation). On

the other hand the number of dwellings required imposes a high occupation ratio. The project will try to turn these objective limitations into strategic potentiality.



PZ954

CAPELLE AAN DEN IJSEEL



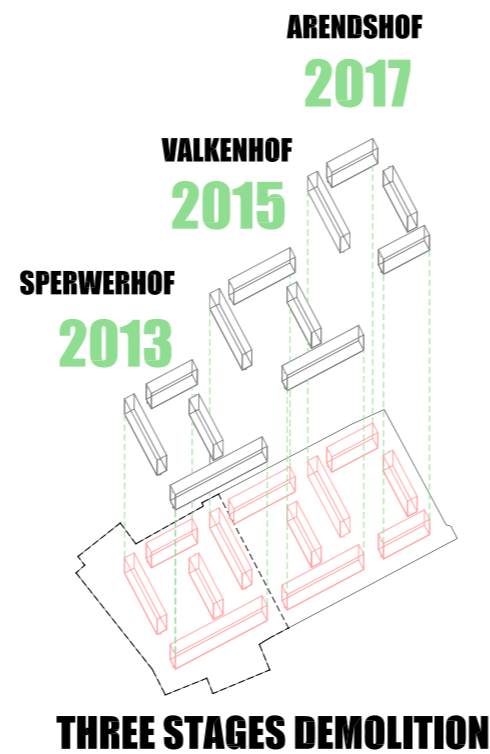
DEMOLITION PROJCT

The demolition of the existing neighbourhood is suggested in three temporary phases: First Sperwerhof in 2013, second Valkenhof in 2015 and finally Arendshof in 2017. We propose using the rubbish result of the demolitions for making up an artificial topography that will be used as urban park, helping to increase the project area and making up a new experimental field as well.

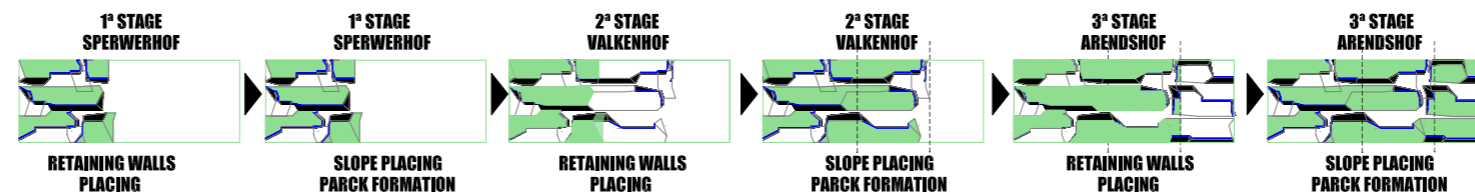
NEW TOPOGRAPHY PARK INCREASE

This "new topography", isolated from the annex urban situations, will work as connection hinge of the different tissues. It will be a meeting point of the different surrounding urban situations, just because of their "difference".

The development of the «new topography» in three linear hills in east-west direction have numerous morphologic conformations that reply to a research in the 'connection' framework and the new ways of life in relation to the immediate open space.

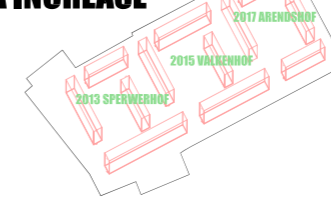


CONSTRUCTION STAGES



PARK AREA INCREASE

DEMOLITION IN THREE STAGES:
2013 SPERWERHOF
2015 VALKENHOF
2017 ARENDSHOF

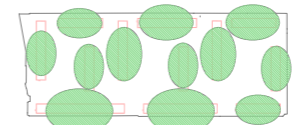


RUBBLE 1+4
40.795m2x0.35slab area
partition walls (15%tot builded)x2.5m highx.15
roofs 8.159x.35

14.280m3
2.300m3
7.850m3
26.230m3

TOTAL 19.430m3x1.35

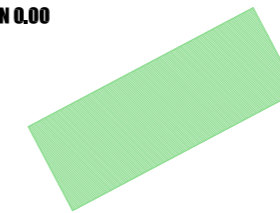
RUBBISH SECURING
2013 SPERWERHOF
2015 VALKENHOF
2017 ARENDSHOF



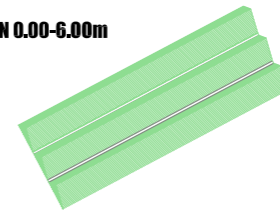
1+4. BUILDINGS FLOORS: 40.795m2 (X0.35) BUILT AREA
PARTITION WALLS: 15% OF TOTAL BUILT X HEIGHT(2.5M) 15300 (X0.15) 2300M3
ROOF PLAN: 8.159 M2 (X 0.35)
(14.280+2300+2850) x 1.35= 26.230 M3 OF RUBBLE
1.35 load factor rate

TOTAL 14.280M3
2300M3
2850M3

GROUND ELEVATION 0.00
AREA: 5.00 HA.
USE 100%



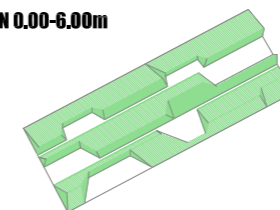
GROUND ELEVATION 0.00-6.00m
AREA: 6.00 HA.
USE 120%



Nº HILLS
TOT 19.430m3x1.35
6 hills (50m diameter-1950m2 area)
12 hills 2.185m3 (30m diameter-700m2 area)

26.230m3
4.372m3 2.50m h
3.50m h

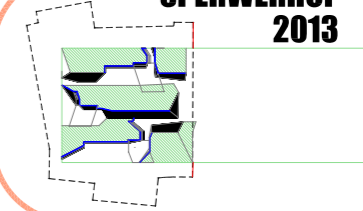
GROUND ELEVATION 0.00-6.00m
USE 120%



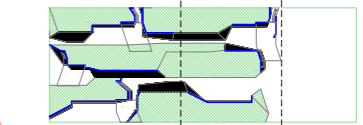
SYLVARUM 03
VARIA
NEDERLAND EUROPA N11



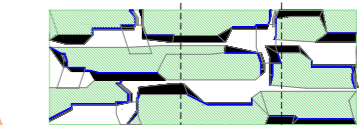
SPERWERHOF 2013



VALKENHOF 2015



ARENDSHOF 2017



PZ954

CAPELLE AAN DEN IJSEEL

SYLVARUM
V A R I A 04
NEDERLAND EUROPA N11



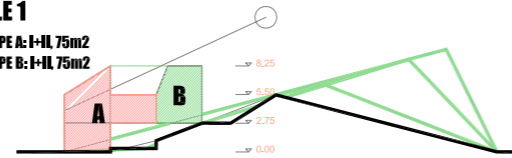
HOUSING AREA INCREASE

The «building» layer is set up similarly to the «topography» layer, therefore the dwelling typology with ground floor access settles down on the new height «on a slope» for solving the access to two dwellings from only an access on ground floor.

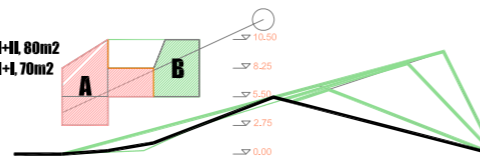
A small percentage of buildings is settled in multi-family housing in small tower blocks (1+6)

HOUSING AREA INCREASE

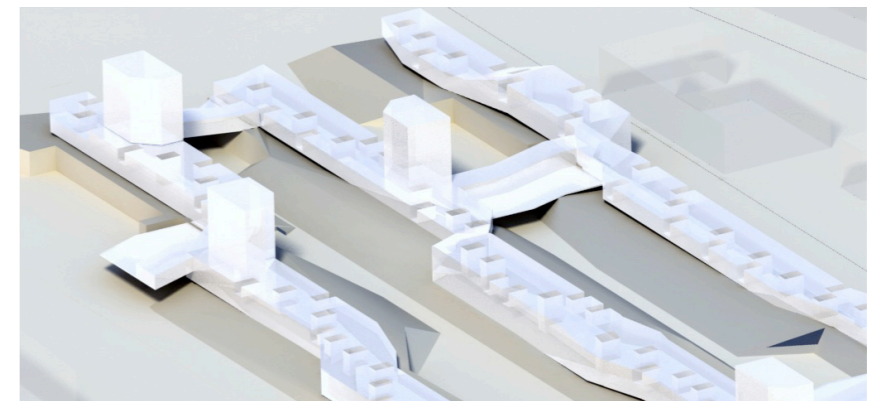
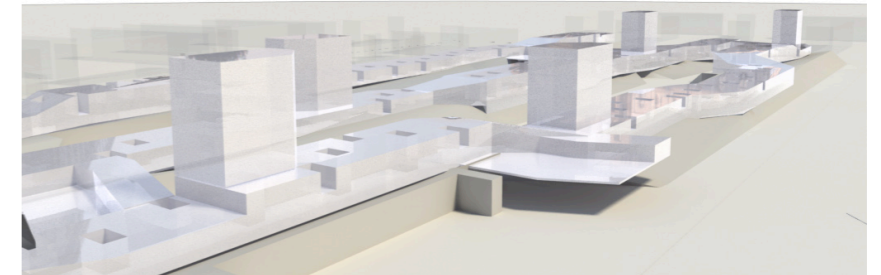
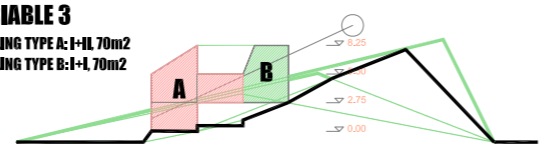
VARIABLE 1
DWELLING TYPE A: 1+HL 75m²
DWELLING TYPE B: 1+HL 75m²



VARIABLE 2
DWELLING TYPE A: 1+HL 80m²
DWELLING TYPE B: 1+HL 70m²



VARIABLE 3
DWELLING TYPE A: 1+HL 70m²
DWELLING TYPE B: 1+HL 70m²



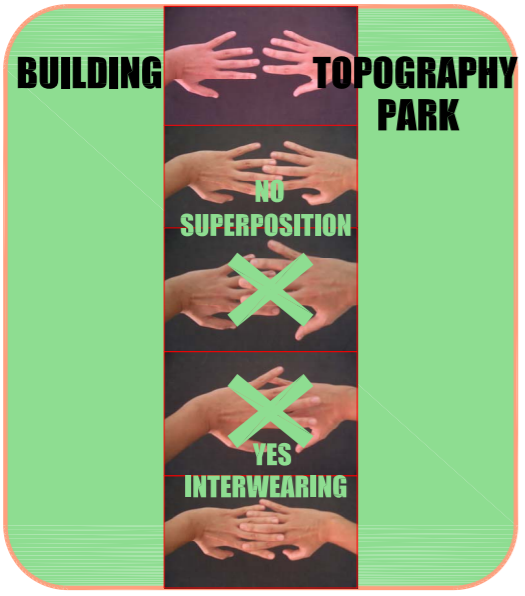
PZ954

CAPELLE AAN DEN IJSEEL

SYLVARUM
V A R I A **05**
NEDERLAND EUROPLAN11



HOVEN 2 PLANNING PROJET



- ROAD TRAFFIC
- GREEN OPEN SPACE
- PARKING BICYCLES/CARS
- DWELLINGS GROUND FLOOR LEVEL
- COLLECTIVE DWELLINGS IN BLOCK NEIGHBOURHOOD PUBLIC BUILDINGS
- PEDERESTIAN ROUTES
- RAISED UP PUBLIC OPEN SPACES

GENERAL PLANNING E_1900
STUDY ZONE

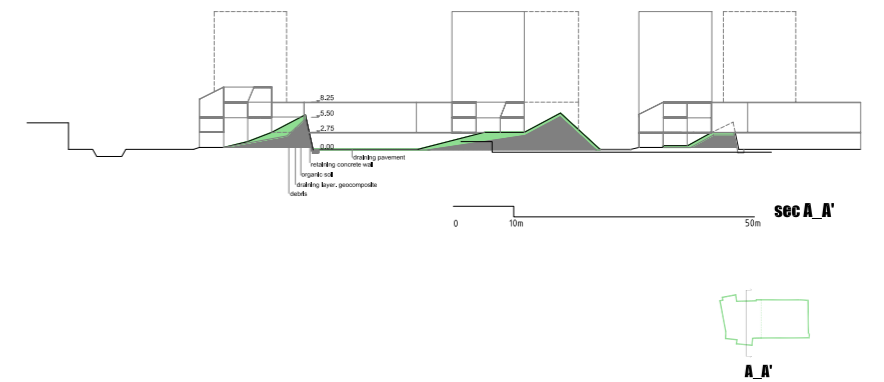
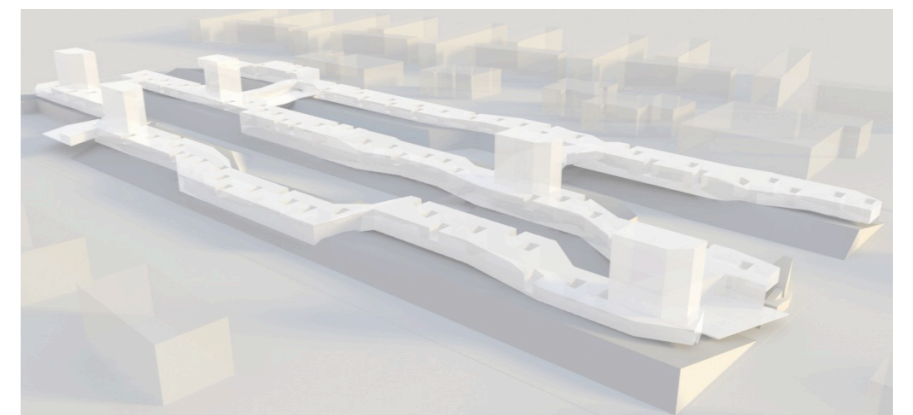
PZ954

**CAPELLE AAN
DEN IJSEEL**

**HOVEN 2 PLANING
PROJET**



**SYLVARUM
V A R I A 06
NEDERLAND EUROPA N11**

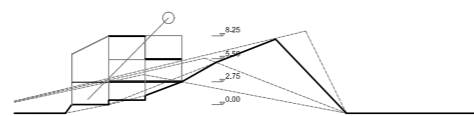
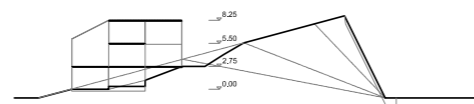
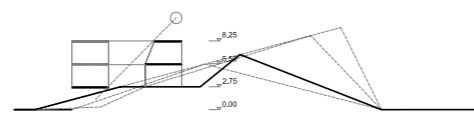
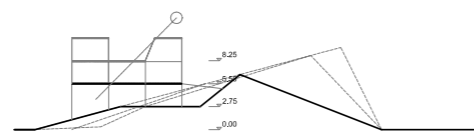


PZ954

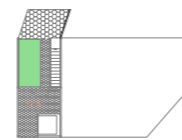
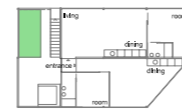
CAPELLE AAN DEN IJSEEL

HOVEN 2 PLANING PROJET

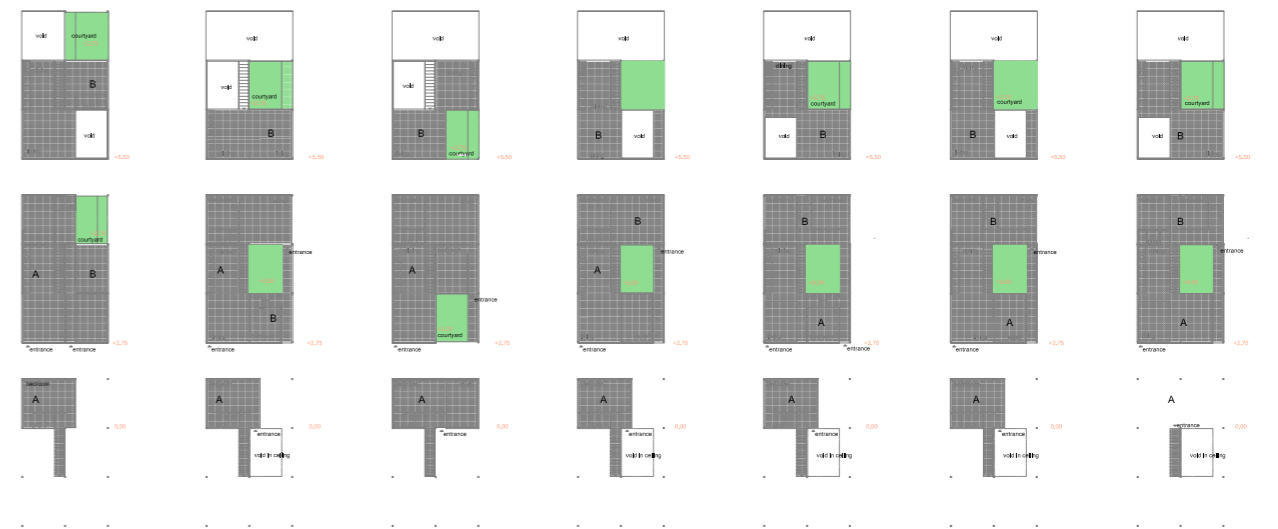
SYLVARUM
V A R I A **07**
NEDERLAND EUROPA N11



**DWELLING WITH GROUND FLOOR ACCESS
SECTIONS PATTERN** E_1:400



COLLECTIVE DWELLING E_1:300



**DWELLING WITH GROUND FLOOR ACCESS
TYPICAL VARIANTS. PLAN.** E_1:300

