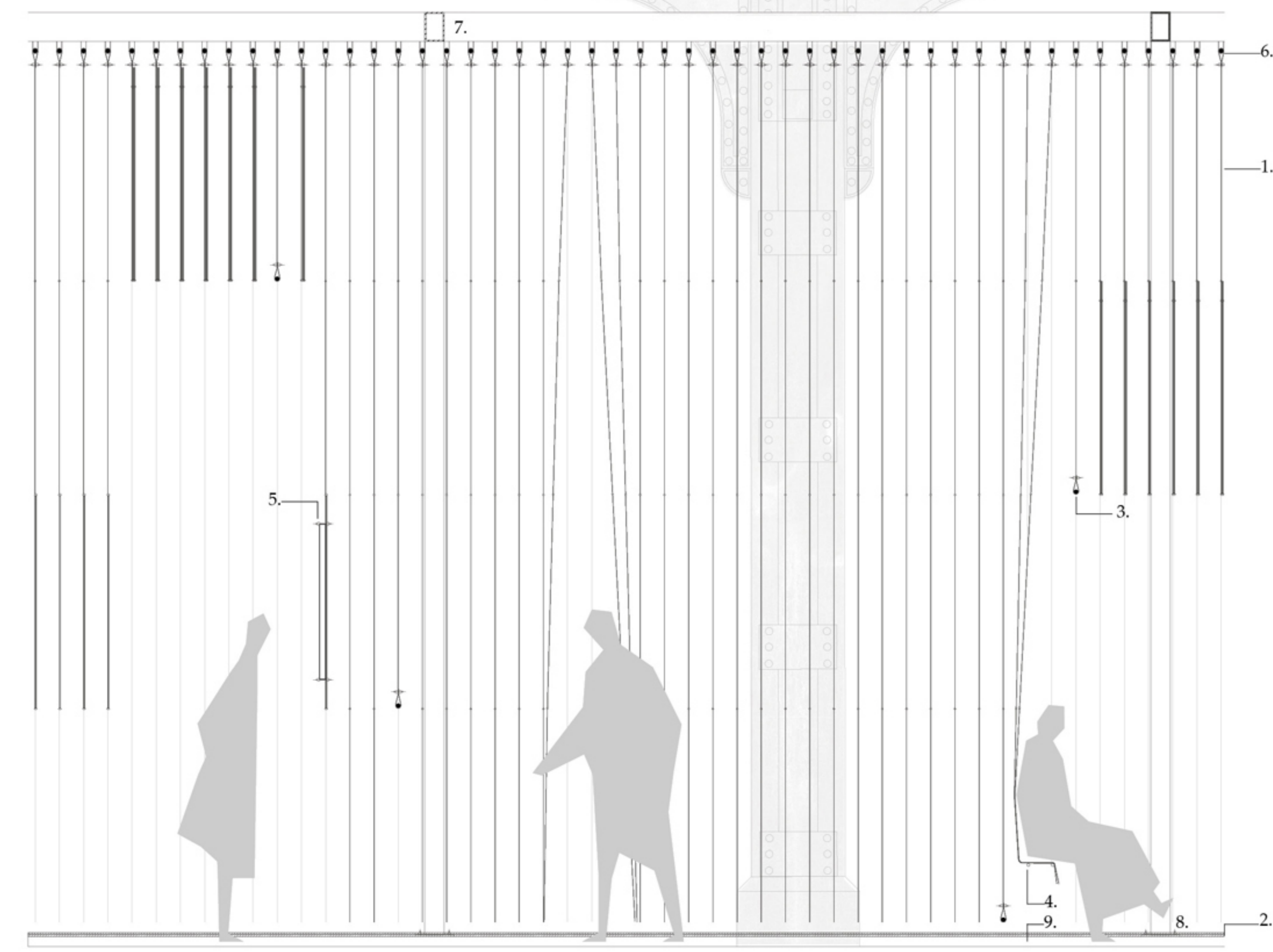
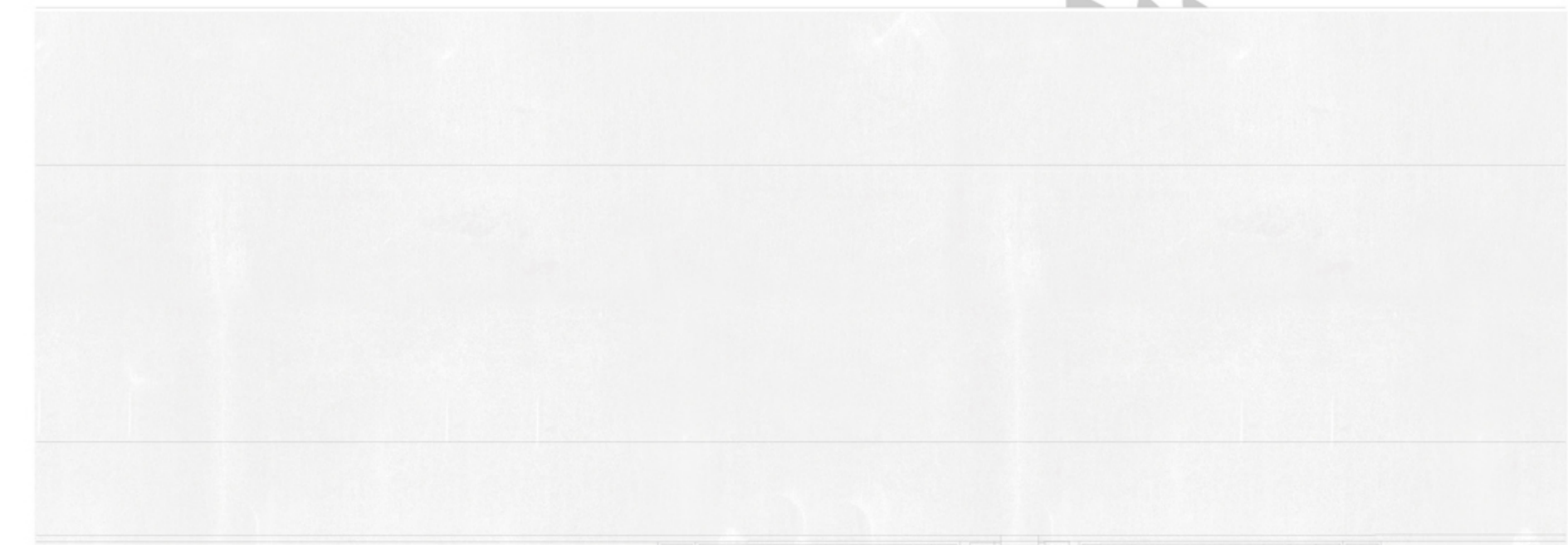


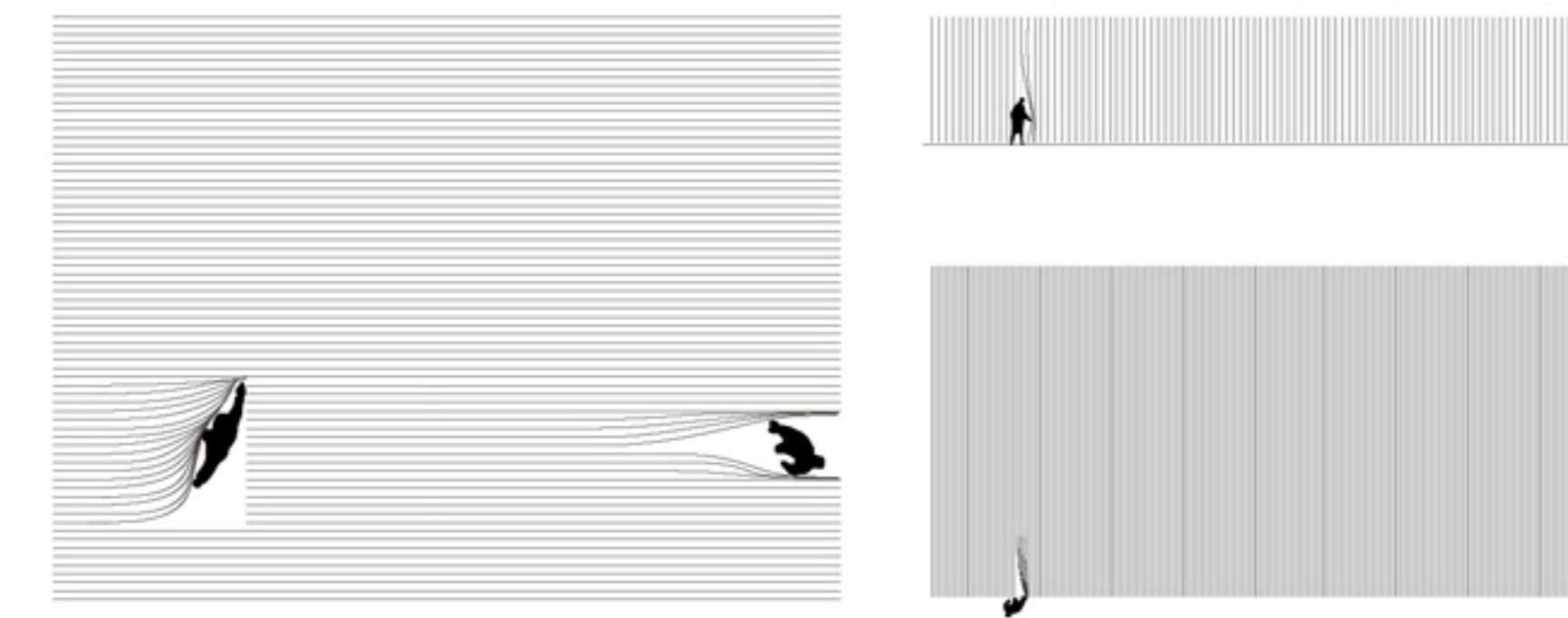
you enter mist.

you enter mist. you slowly push away layers upon layers of whiteness as you discover the space. as the planes slowly stir in the wind and sway from the movement of the ghostlike figures within, you get enchanted by the constantly changing, broken shadows and by the shimmering lights that try to pierce through this floating white mass. you wander through this cloud, in hope of discovering the secrets hidden within. as you get lost in it, confused and intrigued, you, yourself, blur into it and become a part of the exposition, constantly moving and transforming.

as you enter deeper and stumble upon clearings and passageways within the layers, you slowly start to understand what is real and what is merely a shadow.



detail
0 0.5m



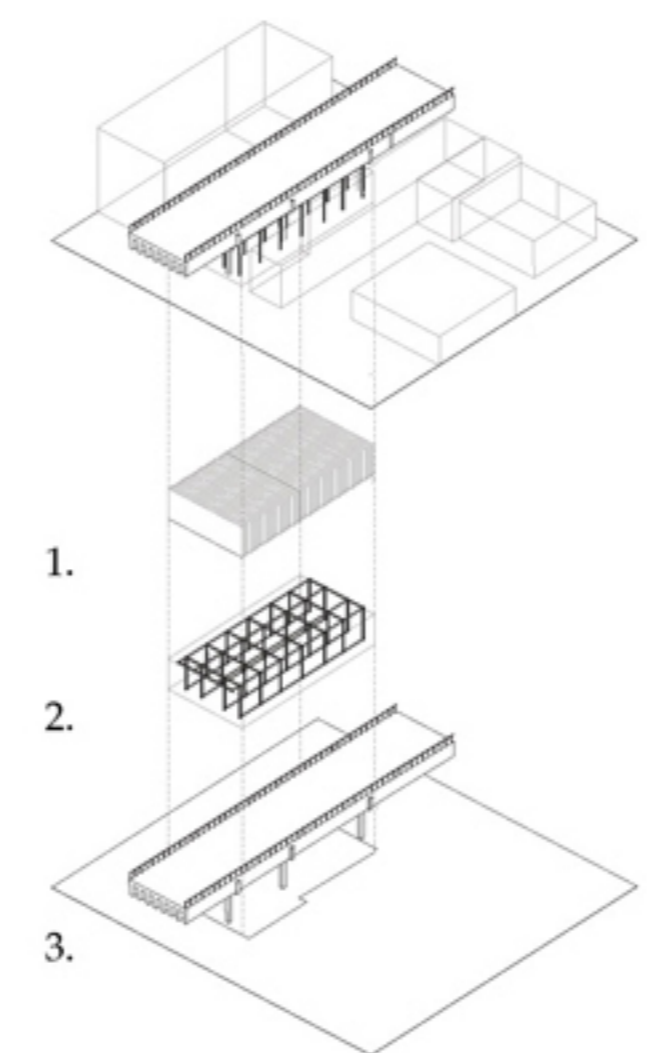
inside the mist.

the mist is a solid, hovering over the whole site.

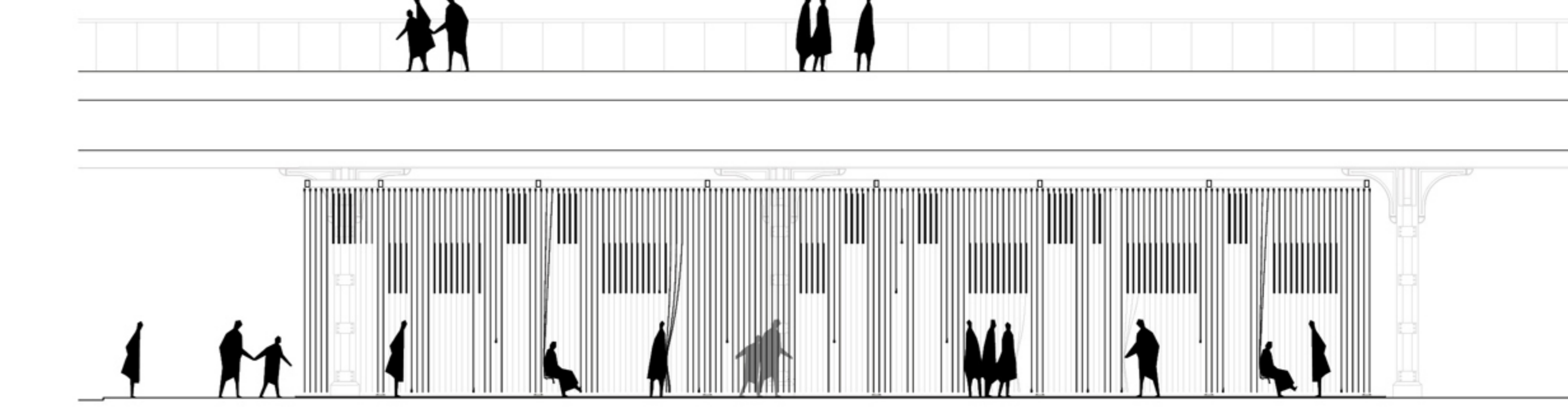
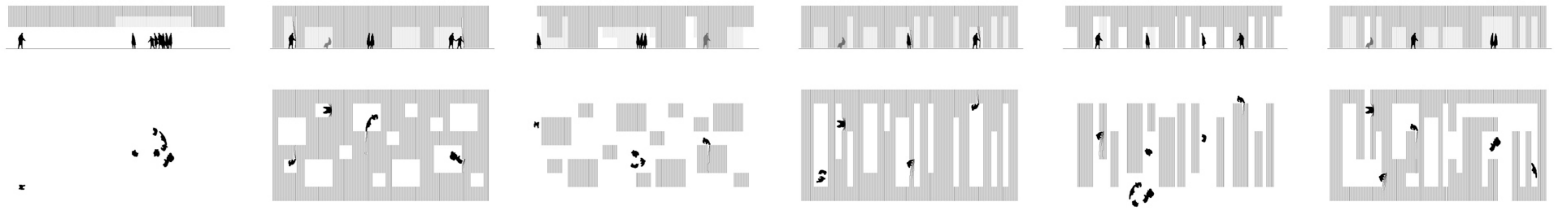
planes of fibreglass mesh, a construction material, simple and affordable (and reusable after the pavillon's life-span as the panels remain untouched), are layered, to create a weightless, cloudlike entity below a heavy shadow of the bridge. broken recycled glass glistens below and crunches underfoot, making visitors invisible yet audible.

intimate cloud like voids are carved out of the solid, varying in dimensions, proportions, ambiances, creating endless patterns to hold exhibitions and be exhibitions themselves.

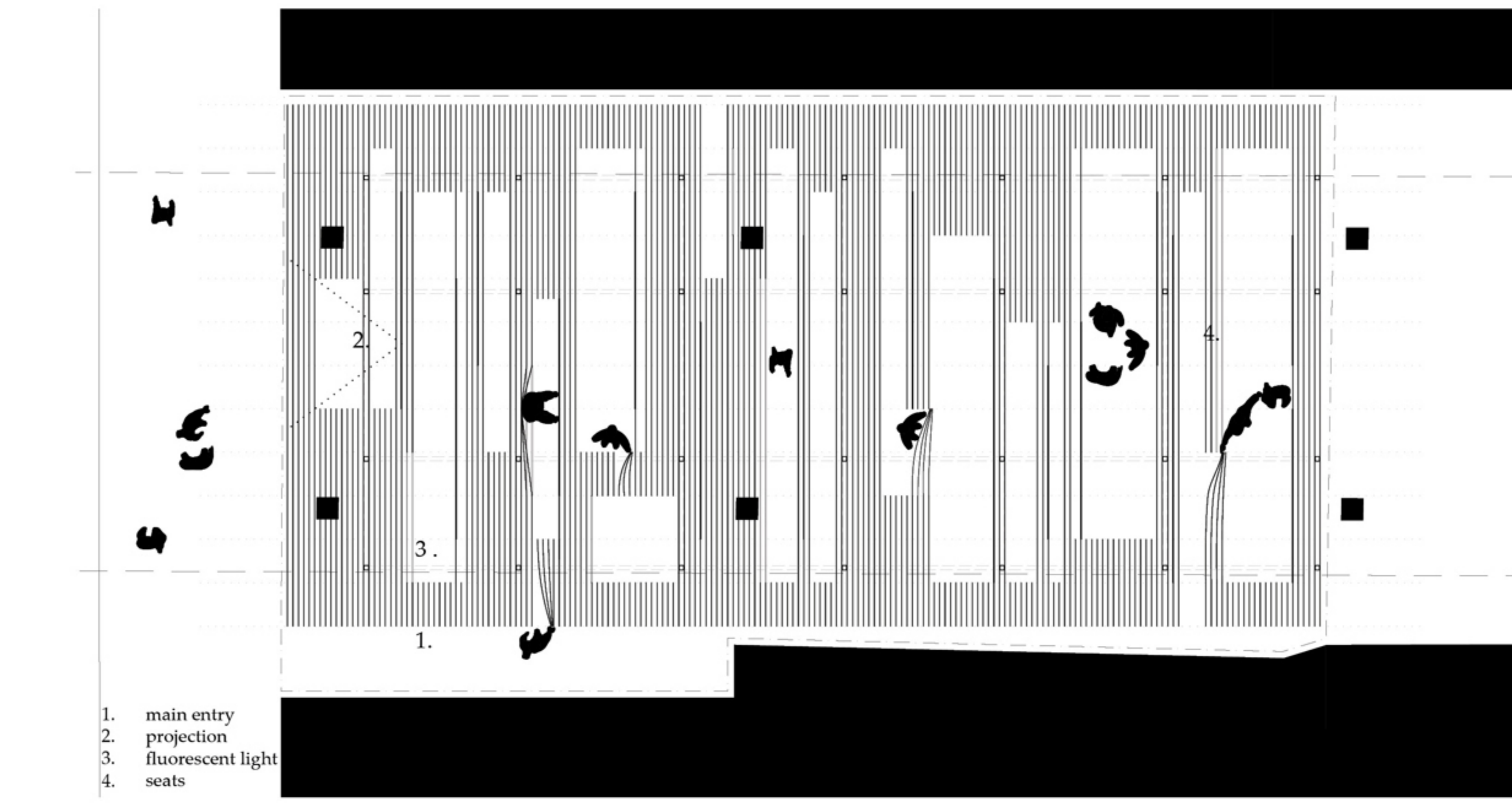
1. adjustable fibreglass mesh panels
4x4mm, 7x7mm, 12x12mm grid variation
1100x2000 panels joined with white cable ties
125mm spacings
2. recycled broken tempered glass as ground cover
3. fluorescent light
4. 15mm diameter rods as seating
exhibited works attached to or projected onto fibreglass mesh panels
6. 20mm diameter metal rods suspended from structure
7. 150x100 RHS beams
3.75m spacings, 2.75/3.75m span
8. 10x100 SHS columns, plate bolted to the perimeter beams
9. 50x50 SHS perimeter beams



mist elements.
1. mesh
2. structure
3. bridge



section
0 1m



plan
0 1m

